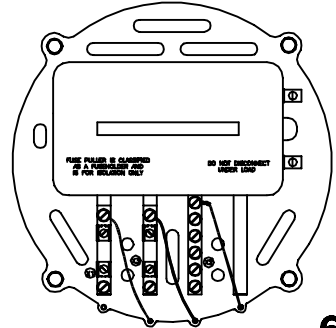
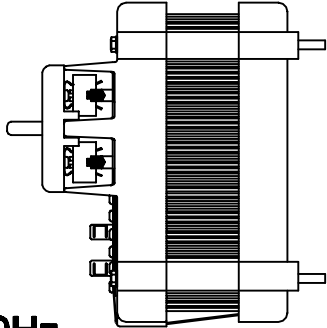
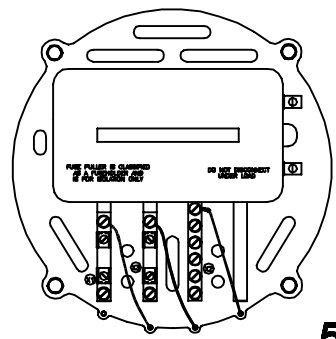
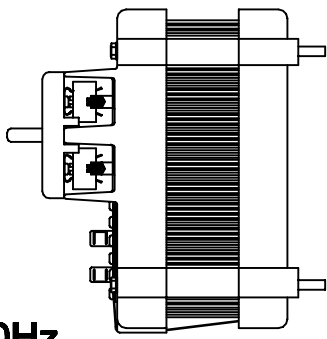


600 VOLT

CONTROL POWER TRANSFORMERS

MODEL NUMBER	OVERALL SIZE			PAGES																												
401 402 403 405		60Hz		<table border="0"> <thead> <tr> <th>Width</th> <th>Height</th> <th>Depth</th> </tr> </thead> <tbody> <tr> <td>9.00</td> <td>9.00</td> <td>7.35</td> </tr> <tr> <td>9.00</td> <td>9.00</td> <td>8.30</td> </tr> <tr> <td>9.00</td> <td>9.00</td> <td>9.00</td> </tr> <tr> <td>9.00</td> <td>9.00</td> <td>10.50</td> </tr> </tbody> </table>	Width	Height	Depth	9.00	9.00	7.35	9.00	9.00	8.30	9.00	9.00	9.00	9.00	9.00	10.50	<h2>2-3</h2>												
Width	Height	Depth																														
9.00	9.00	7.35																														
9.00	9.00	8.30																														
9.00	9.00	9.00																														
9.00	9.00	10.50																														
401 402 403 405		50Hz		<table border="0"> <thead> <tr> <th>Width</th> <th>Height</th> <th>Depth</th> </tr> </thead> <tbody> <tr> <td>9.00</td> <td>9.00</td> <td>7.85</td> </tr> <tr> <td>[229]</td> <td>[229]</td> <td>[200]</td> </tr> <tr> <td>9.00</td> <td>9.00</td> <td>9.05</td> </tr> <tr> <td>[229]</td> <td>[229]</td> <td>[230]</td> </tr> <tr> <td>9.00</td> <td>9.00</td> <td>9.75</td> </tr> <tr> <td>[229]</td> <td>[229]</td> <td>[248]</td> </tr> <tr> <td>9.00</td> <td>9.00</td> <td>10.50</td> </tr> <tr> <td>[229]</td> <td>[229]</td> <td>[267]</td> </tr> </tbody> </table>	Width	Height	Depth	9.00	9.00	7.85	[229]	[229]	[200]	9.00	9.00	9.05	[229]	[229]	[230]	9.00	9.00	9.75	[229]	[229]	[248]	9.00	9.00	10.50	[229]	[229]	[267]	<h2>4-5</h2>
Width	Height	Depth																														
9.00	9.00	7.85																														
[229]	[229]	[200]																														
9.00	9.00	9.05																														
[229]	[229]	[230]																														
9.00	9.00	9.75																														
[229]	[229]	[248]																														
9.00	9.00	10.50																														
[229]	[229]	[267]																														

CONTROL POWER TRANSFORMER

Model 401-405

REGULATORY AGENCY APPROVALS



UL recognition is under file E161807, manufactured and tested to UL Standard 506.

APPLICATION:

Control power transformer for line to line primary connection with dual secondary operation—240/120 volts—see connection diagram below. (Primary and secondary fuse clips supplied). Fuses are optional and are available on request.

This transformer may have very high inrush currents. Therefore type RK-5 fuses must be used. See table for ampacity selection.

FREQUENCY:

60 Hz

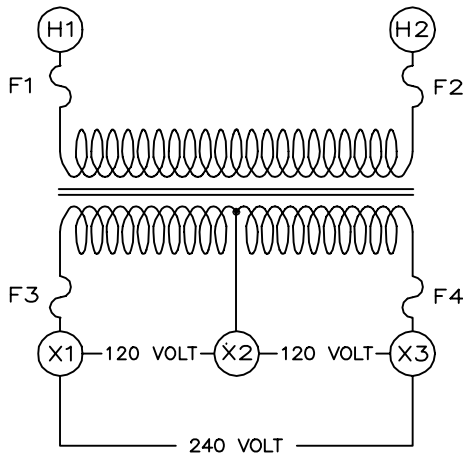
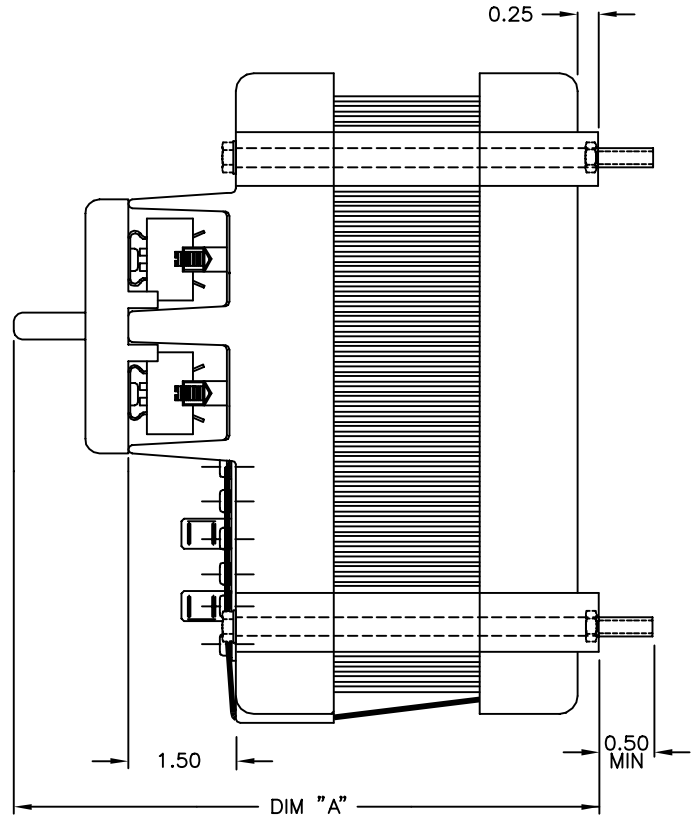
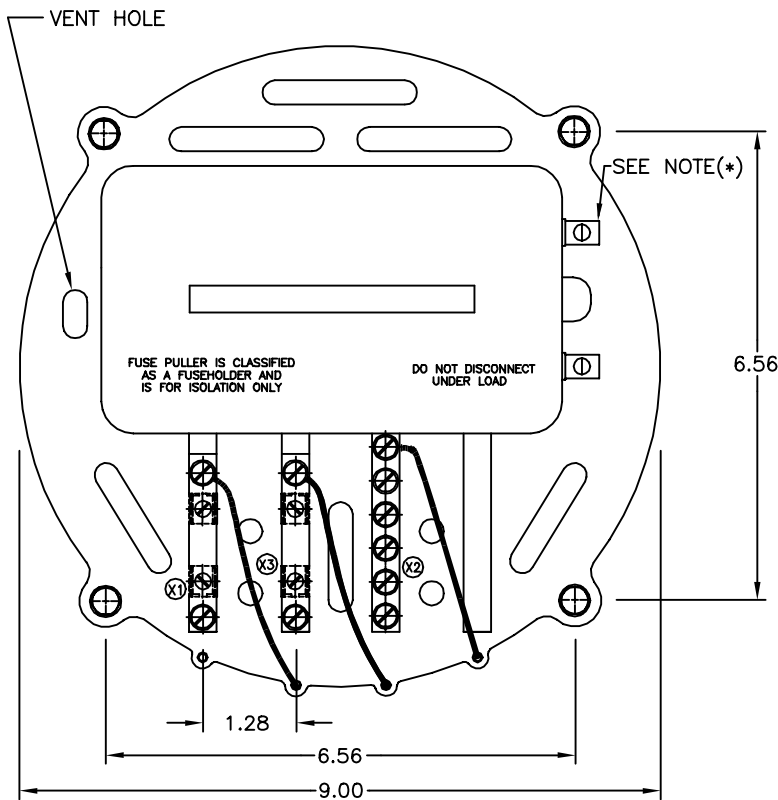
INSULATION LEVEL:

0.6 kV, CLASS H (180°C).

STANDARD SECONDARY VOLTAGE:
240 Volts with Center Tap.

THERMAL RATING:
120°C rise @ 40°C Ambient

- Terminals are 10-32 plain brass, pan head screws.
- Mounting bolts (4) are 1/4-20, zinc plated.
- * Vendor to supply ILSCO terminal lugs (SLU-25), or provision to accept #10 ring terminals.
- Fuse puller is classified as a fuse holder and is for isolation only! Do not disconnect under load.



I.T.I. MODEL	RATING @ 40°C	TOTAL WATTS DISSIPATED (APPROX)	DIM "A"	APPROX WEIGHT
401	1 kVA	50	7.35	30
402	2 kVA	80	8.30	35
403	3 kVA	100	9.00	40
405	5 kVA	170	10.50	60

Model 401-405

PRIMARY L - L VOLTS (H1-H2)	1 kVA-MODEL 401			
	CATALOG NUMBER	RATED AMPS	FUSES	
600	401-600-6	1.67	RK-5, 5A 600 VOLT	TYPE FRS-R
480	401-480-6	2.08	RK-5, 5A 600 VOLT	TYPE FRS-R
240	401-240-6	4.17	RK-5, 10A 600 VOLT	TYPE FRS-R
208	401-208-6	4.81	RK-5, 12A 600 VOLT	TYPE FRS-R
SEC: X1 & X3		4.17	6 AMP MAX	

PRIMARY L - L VOLTS (H1-H2)	2 kVA-MODEL 402			
	CATALOG NUMBER	RATED AMPS	FUSES	
600	402-600-6	3.33	RK-5, 8A 600 VOLT	TYPE FRS-R
480	402-480-6	4.17	RK-5, 10A 600 VOLT	TYPE FRS-R
240	402-240-6	8.33	RK-5, 20A 600 VOLT	TYPE FRS-R
208	402-208-6	9.62	RK-5, 20A 600 VOLT	TYPE FRS-R
SEC: X1 & X3		8.33	12 AMP MAX	

PRIMARY L - L VOLTS (H1-H2)	3 kVA-MODEL 403			
	CATALOG NUMBER	RATED AMPS	FUSES	
600	403-600-6	5.00	RK-5, 12A 600 VOLT	TYPE FRS-R
480	403-480-6	6.25	RK-5, 15A 600 VOLT	TYPE FRS-R
240	403-240-6	12.50	RK-5, 30A 600 VOLT	TYPE FRS-R
208	403-208-6	14.42	RK-5, 30A 600 VOLT	TYPE FRS-R
SEC: X1 & X3		12.50	20 AMP MAX	

PRIMARY L - L VOLTS (H1-H2)	5 kVA-MODEL 405			
	CATALOG NUMBER	RATED AMPS	FUSES	
600	405-600-6	8.33	RK-5, 20A 600 VOLT	TYPE FRS-R
480	405-480-6	10.42	RK-5, 25A 600 VOLT	TYPE FRS-R
240	405-240-6	20.83	RK-5, 50A 250 VOLT	TYPE FRN-R
208	405-208-6	24.04	RK-5, 60A 250 VOLT	TYPE FRN-R
SEC: X1 & X3		20.83	30 AMP MAX	

405-240 & 405-208 PRIMARY FUSES ARE 250 VOLT (BUSSMANN: TYPE FRN-R, 13/16 x 3 INCHES).
 401-600 THRU 405-480 PRIMARY FUSES ARE 600 VOLT (BUSSMANN: TYPE FRS-R, 13/16 x 5 INCHES).
 SECONDARY FUSE RATINGS LISTED ABOVE - USE BUSSMANN TYPE FNQ, TIME DELAY FUSES.

CONTROL POWER TRANSFORMER

Model 401-405

APPLICATION:

Control power transformer for line to line primary connection with dual secondary operation—240/120 volts—see connection diagram below. (Primary and secondary fuse clips supplied). Fuses are optional and are available on request.

This transformer may have very high inrush currents. Therefore type RK-5 fuses must be used. See table for ampacity selection.

FREQUENCY:

50 Hz

INSULATION LEVEL:

0.6 kV, CLASS H (180°C).

STANDARD

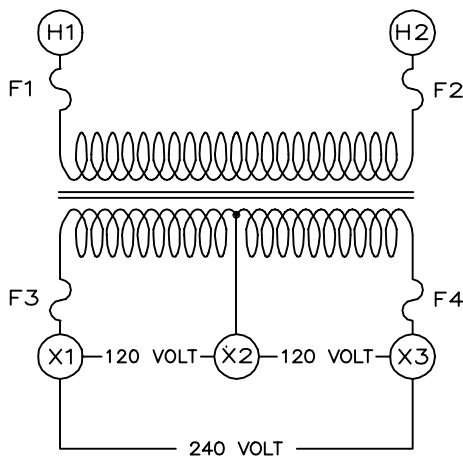
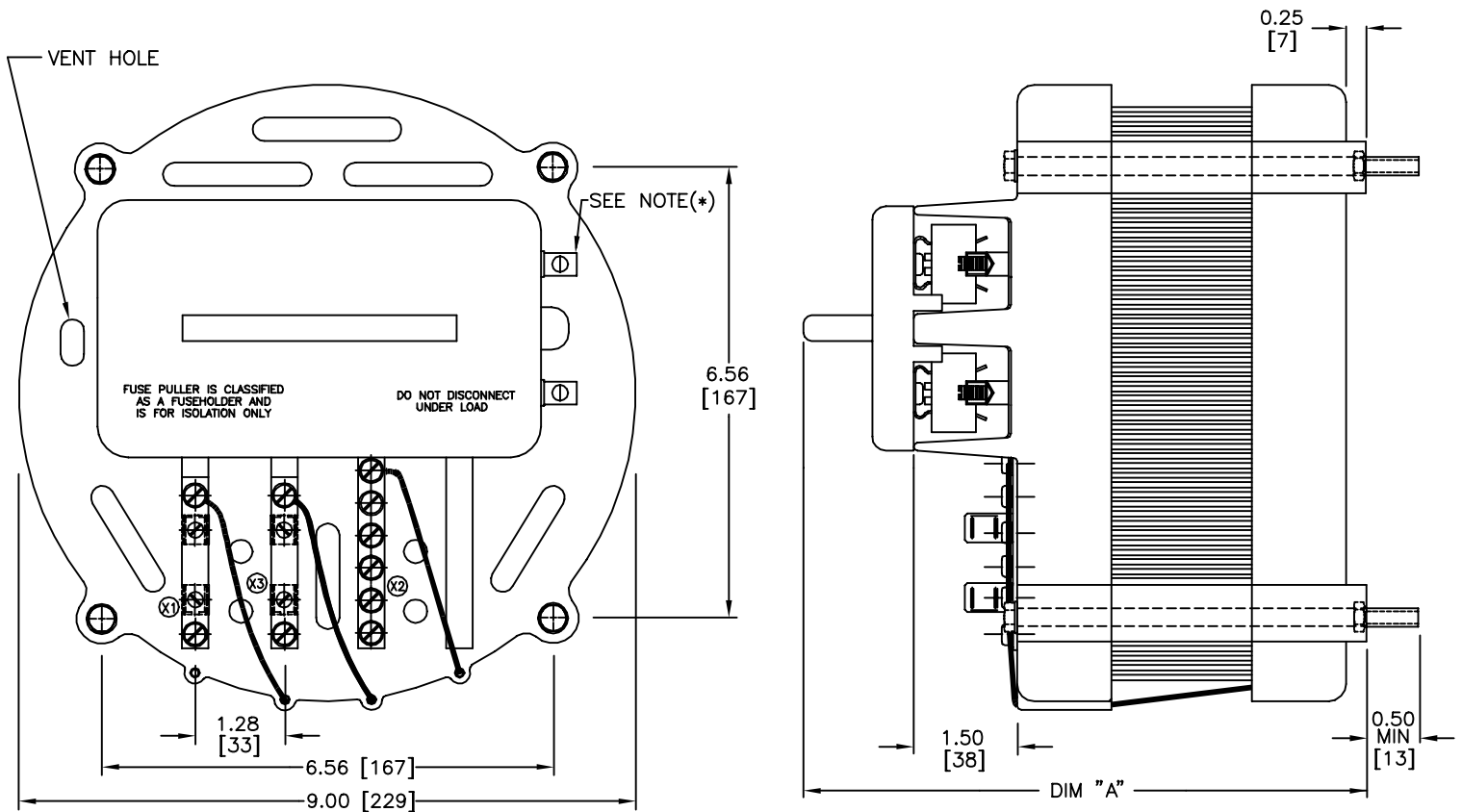
SECONDARY VOLTAGE:

240 Volts with Center Tap.

THERMAL RATING:

120°C rise @ 40°C Ambient

- Terminals are 10-32 plain brass, pan head screws.
- Mounting bolts (4) are 1/4-20, zinc plated.
- * • Vendor to supply ILSCO terminal lugs (SLU-25), or provision to accept #10 ring terminals.
- Fuse puller is classified as a fuse holder and is for isolation only! Do not disconnect under load.
- Dimensions: Inches [Metric]



I.T.I. MODEL	RATING @ 40°C	TOTAL WATTS DISSIPATED (APPROX)	DIM "A"	APPROX WEIGHT
401	1 kVA	50	7.85 [200]	35
402	2 kVA	80	9.05 [230]	40
403	3 kVA	100	9.75 [248]	45
405	5 kVA	170	10.50 [267]	60

Model 401-405

PRIMARY L - L VOLTS (H1-H2)	1 kVA-MODEL 401			
	CATALOG NUMBER	RATED AMPS	FUSES	
380	401-380-5	2.63	RK-5, 6A 600 VOLT	TYPE FRS-R
400	401-400-5	2.50	RK-5, 6A 600 VOLT	TYPE FRS-R
416	401-416-5	2.40	RK-5, 6A 600 VOLT	TYPE FRS-R
SEC: X1 & X3		4.17	6 AMP MAX	

PRIMARY L - L VOLTS (H1-H2)	2 kVA-MODEL 402			
	CATALOG NUMBER	RATED AMPS	FUSES	
380	402-380-5	5.26	RK-5, 12A 600 VOLT	TYPE FRS-R
400	402-400-5	5.00	RK-5, 12A 600 VOLT	TYPE FRS-R
416	402-416-5	4.81	RK-5, 12A 600 VOLT	TYPE FRS-R
SEC: X1 & X3		8.33	12 AMP MAX	

PRIMARY L - L VOLTS (H1-H2)	3 kVA-MODEL 403			
	CATALOG NUMBER	RATED AMPS	FUSES	
380	403-380-5	7.89	RK-5, 17.5A 600 VOLT	TYPE FRS-R
400	403-400-5	7.50	RK-5, 17.5A 600 VOLT	TYPE FRS-R
416	403-416-5	7.21	RK-5, 17.5A 600 VOLT	TYPE FRS-R
SEC: X1 & X3		12.50	20 AMP MAX	

PRIMARY L - L VOLTS (H1-H2)	5 kVA-MODEL 405			
	CATALOG NUMBER	RATED AMPS	FUSES	
380	405-380-5	13.16	RK-5, 30A 600 VOLT	TYPE FRS-R
400	405-400-5	12.50	RK-5, 30A 600 VOLT	TYPE FRS-R
416	405-416-5	12.02	RK-5, 30A 250 VOLT	TYPE FRN-R
SEC: X1 & X3		20.83	30 AMP MAX	

PRIMARY FUSES ARE 600 VOLT (BUSSMANN: TYPE FRS-R, 13/16 x 5 INCHES).
SECONDARY FUSE RATINGS LISTED ABOVE - USE BUSSMANN TYPE FNQ, TIME DELAY FUSES.