

# CURRENT TRANSFORMER

Model 788MR

Window Diameter 4.00"

**APPLICATION:**  
Relaying and metering.

**FREQUENCY:**  
50-400 Hz.

**INSULATION LEVEL:**  
0.6 kV, BIL 10 kV full wave.

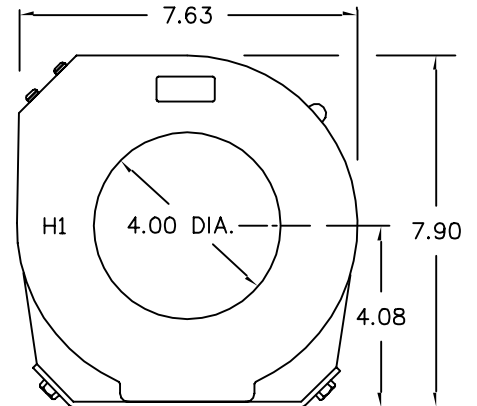
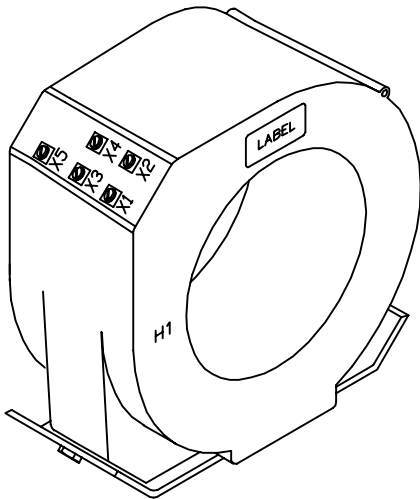
**CONTINUOUS THERMAL CURRENT RATING FACTOR:**  
2.0 at 30°C. amb., 1.5 at 55°C. amb.

- Secondary terminals are brass screws No. 10-32 with one flatwasher and lockwasher.
- Approximate weight 20 lbs.

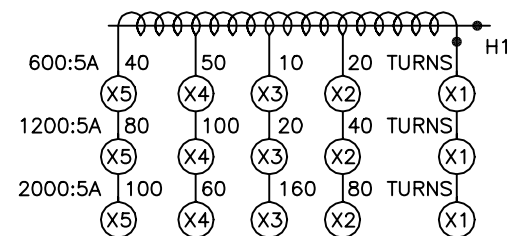
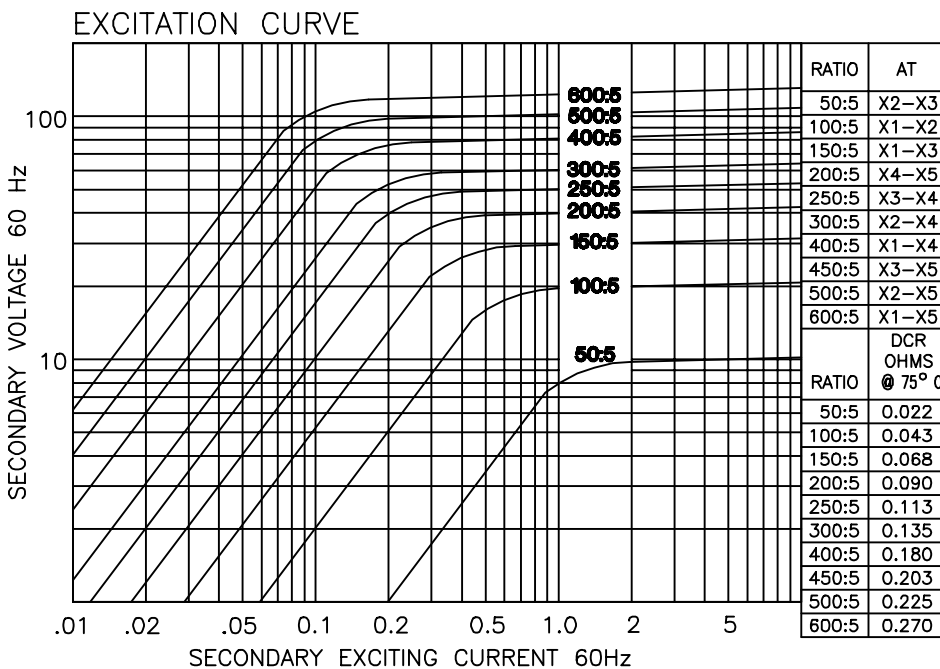
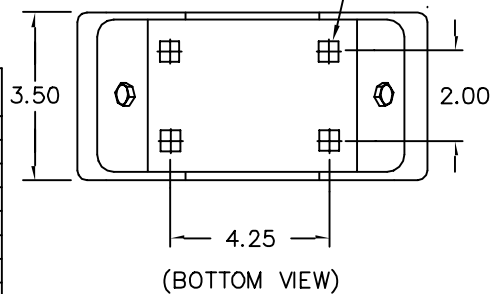
REGULATORY AGENCY APPROVALS



Manufactured to meet the requirements of ANSI/IEEE C57.13. Classified by U.L. in accordance with IEC 44-1.

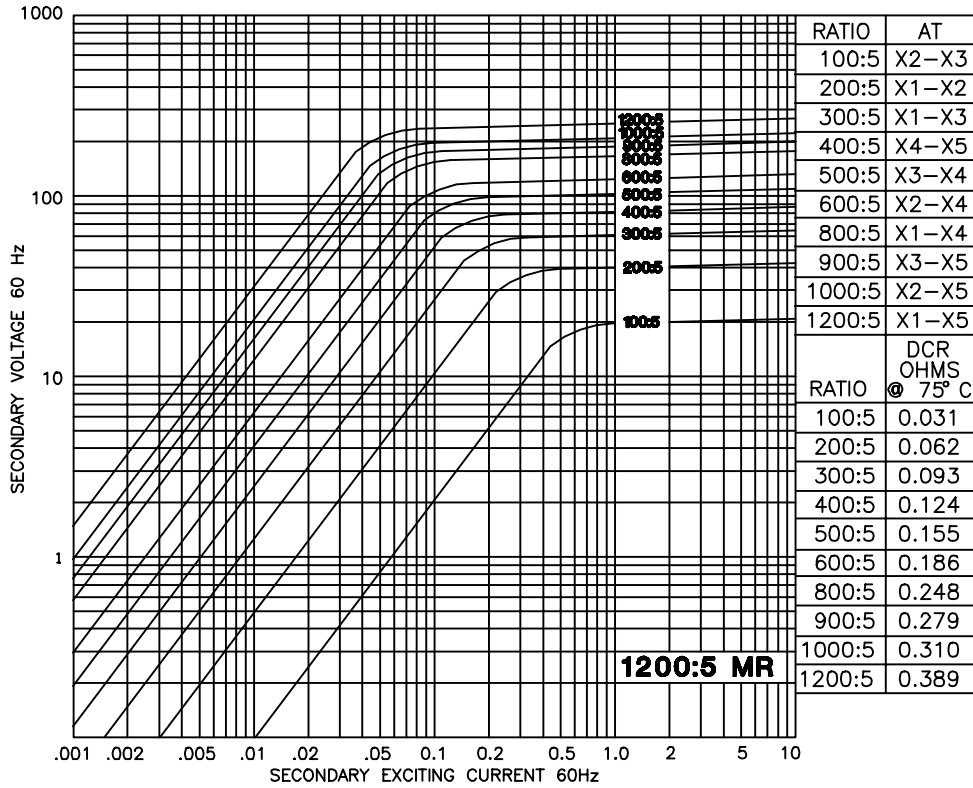


BASEPLATE HAS (4) 0.47 SQUARE HOLES FOR CAPTIVE NUTS

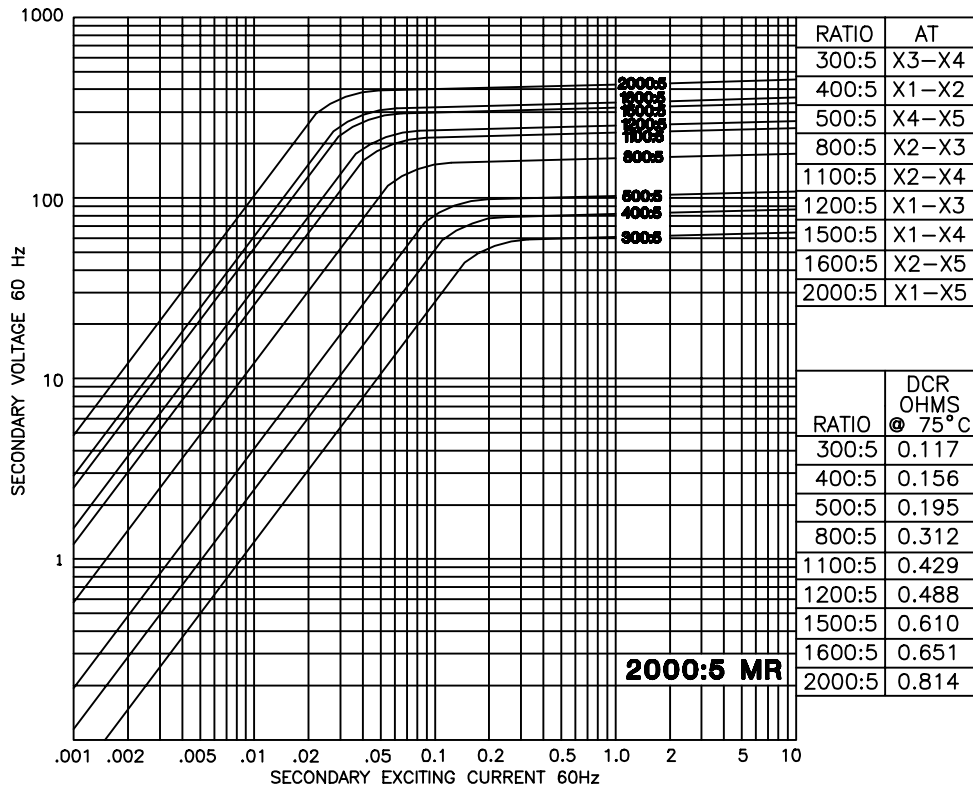


MODEL 788 - 601MR - rating C100

# TYPICAL EXCITATION CURVES - MODEL 788MR



**MODEL 788 - 122MR - rating C200**



**MODEL 788 - 202MR - rating C200**