

# CURRENT TRANSFORMER

Model 732

Window Diameters  
5.56," 6.56"

**APPLICATION:**  
Relaying and metering.

**FREQUENCY:**  
50-400 Hz.

**INSULATION LEVEL:**  
0.6 kV BIL, 10kV full wave.

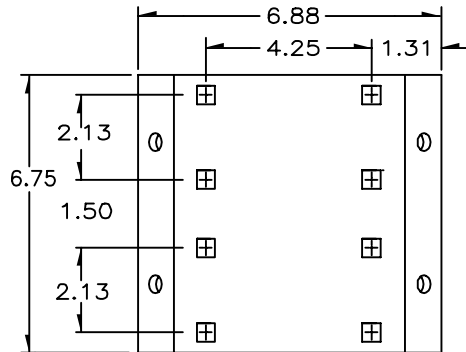
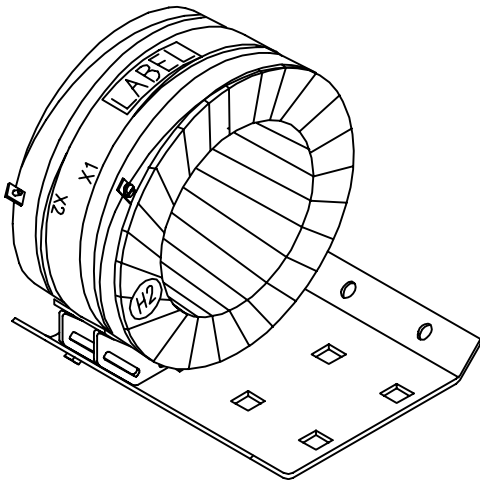
REGULATORY AGENCY APPROVALS



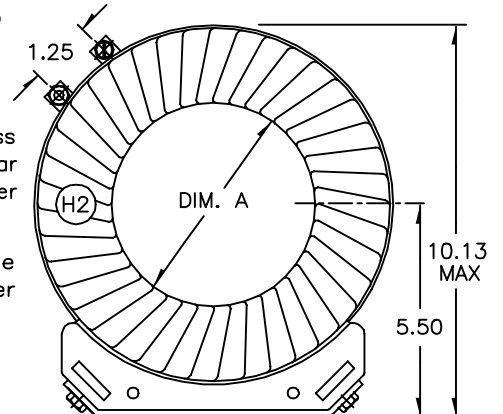
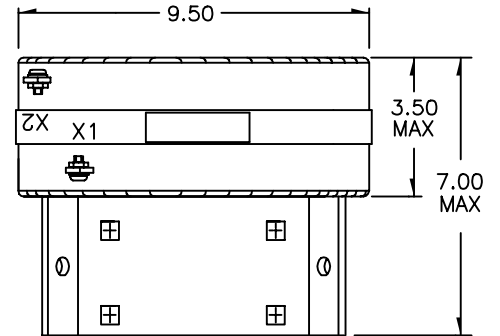
Manufactured to meet the requirements of ANSI/IEEE C57.13.  
Classified by U.L. in accordance with IEC 44-1.

**CONTINUOUS THERMAL CURRENT RATING FACTOR:**  
1.33 at 30°C. amb., 1.0 at 55°C. amb.

- Secondary terminals are brass screws No.10-32 with one flat-washer, lockwasher and regular nut.
- Multi-ratios available on request.
- Approximate weight:  
150:5 thru 600:5 - 23 lbs.  
750:5 thru 1500:5 - 18 lbs.



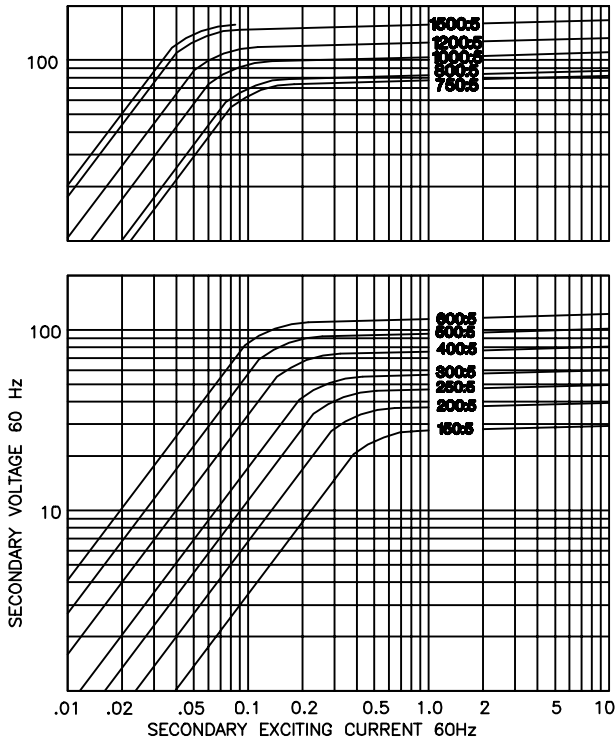
BASEPLATE (BOTTOM VIEW)  
(8) SLOTS  
0.47 SQUARE



Dual current transformers can be fitted with the same or different ratios. Unless otherwise specified, only one current transformer will be supplied, mounted in the rear position of the base plate. The current transformer can be repositioned to the center or front or removed after installation without removing the base plate.

When two current transformers are supplied on a common base plate, the secondaries will be marked 1X1, 1X2 and 2X1, 2X2, with current transformer No. 1 in the front position.

EXCITATION CURVE



CATALOG NUMBER	CURRENT RATIO	RELAY CLASS	ANSI METERING CLASS AT 60 Hz					SECONDARY WINDING RESISTANCE (OHMS @ 75°C)	DIM. A
			B0.1	B0.2	B0.5	B0.9	B1.8		
732-151	150:5	C 20	0.6	1.2	2.4	4.8	4.8	0.074	5.56 MIN.
732-201	200:5	C 20	0.6	0.6	1.2	2.4	4.8	0.103	
732-251	250:5	C 20	0.3	0.3	0.6	1.2	2.4	0.128	
732-301	300:5	C 50	0.3	0.3	0.6	1.2	2.4	0.154	
732-401	400:5	C 50	0.3	0.3	0.3	0.6	1.2	0.205	
732-501	500:5	C 50	0.3	0.3	0.3	0.3	0.6	0.257	
732-601	600:5	C100	0.3	0.3	0.3	0.3	0.3	0.308	
732-751	750:5	C 50	0.3	0.3	0.3	0.3	0.3	0.333	6.56 MIN.
732-801	800:5	C 50	0.3	0.3	0.3	0.3	0.3	0.347	
732-102	1000:5	C100	0.3	0.3	0.3	0.3	0.3	0.434	
732-122	1200:5	C100	0.3	0.3	0.3	0.3	0.3	0.520	
732-152	1500:5	C100	0.3	0.3	0.3	0.3	0.3	0.651	