

# CURRENT TRANSFORMER

**Model 681**

*Window Diameter 7.02"*

**APPLICATION:**  
Relaying and metering.

**FREQUENCY:**  
50-400 Hz.

**INSULATION LEVEL:**  
0.6 kV, BIL 10 kV full wave.

**CONTINUOUS THERMAL CURRENT RATING FACTOR:**

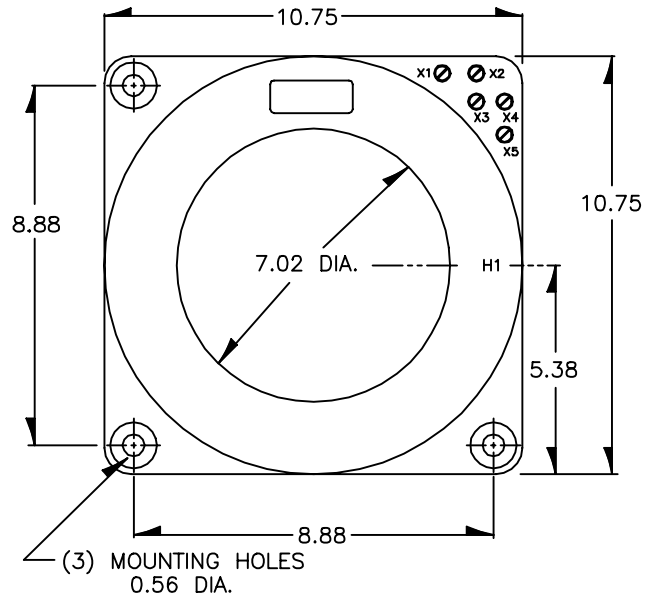
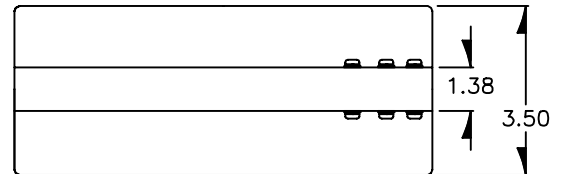
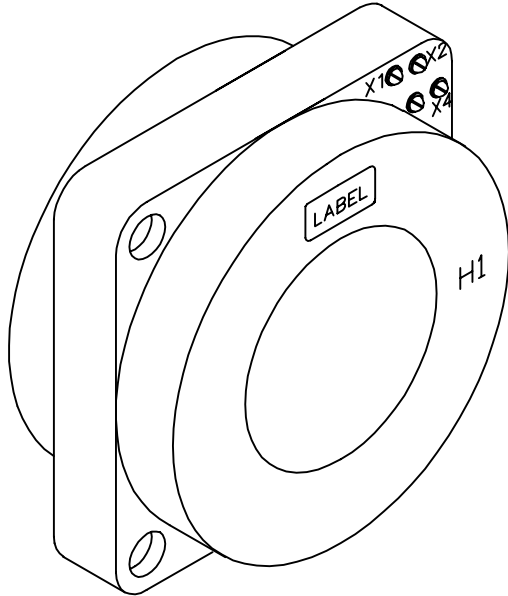
50:5 - 2000:5: 2.00 at 30°C. ambient.  
1.50 at 55°C. ambient.  
2500:5 - 4000:5: 1.33 at 30°C. ambient.  
1.00 at 55°C. ambient.

- Secondary terminals are brass screws No. 10-32 with one flatwasher and lockwasher, accessible from either side.
- Approximate weight 34 lbs.

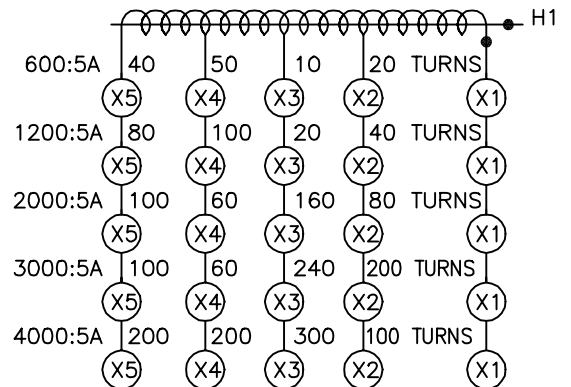
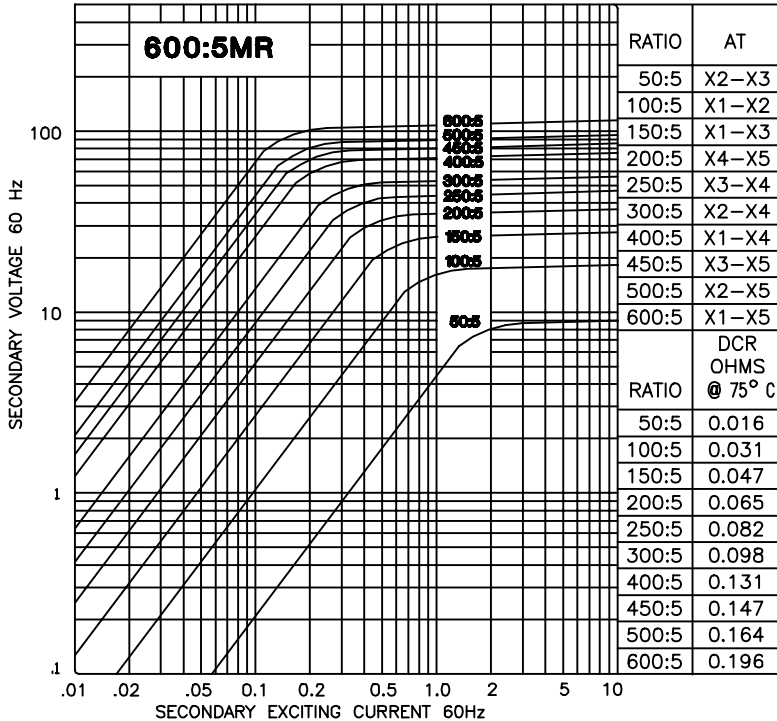
REGULATORY AGENCY APPROVALS



Manufactured to meet the requirements of ANSI/IEEE C57.13.  
Classified by U.L. in accordance with IEC 44-1.



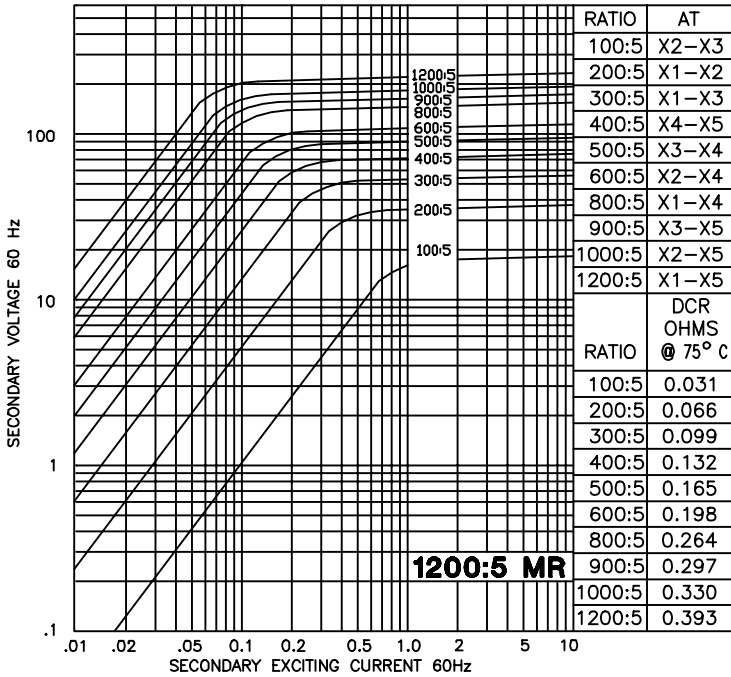
EXCITATION CURVE



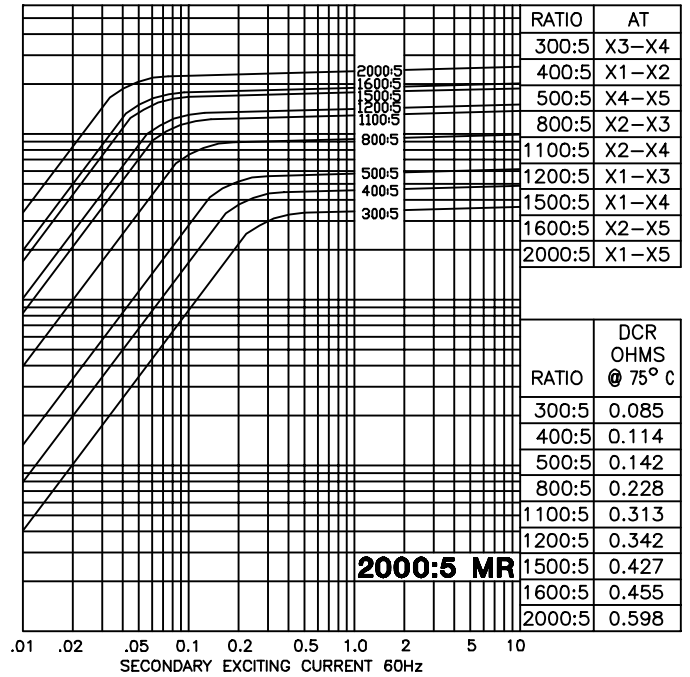
CONNECTION DIAGRAM

**MODEL 681 - 601MR - rating C100**

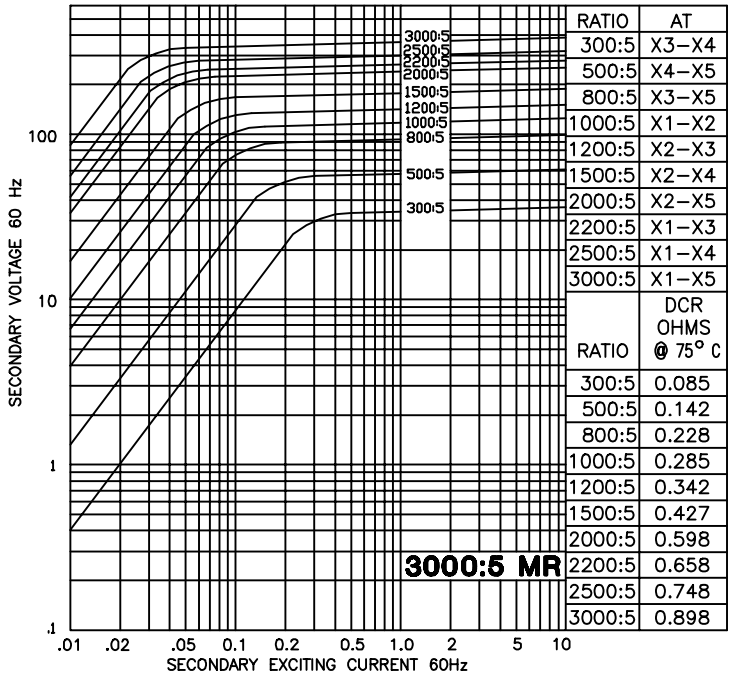
# TYPICAL EXCITATION CURVES - MODEL 681



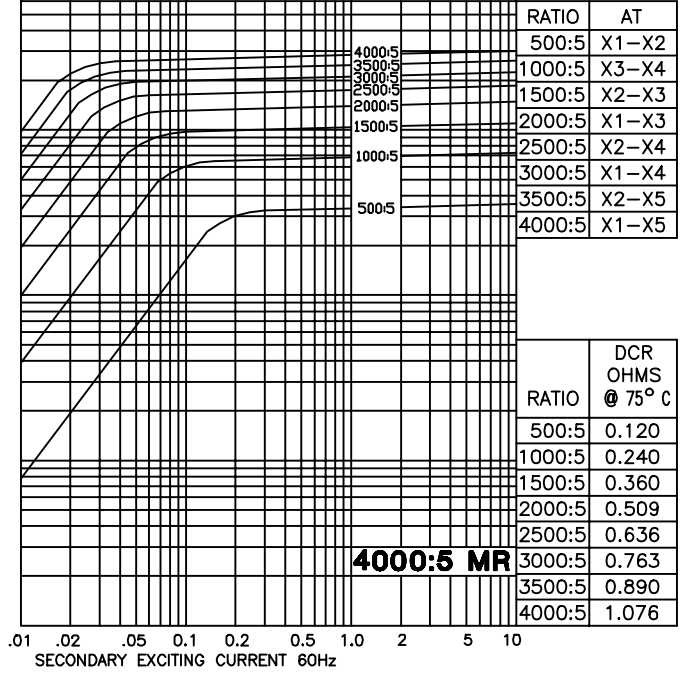
**MODEL 681 - 122MR - rating C200**



**MODEL 681 - 202MR - rating C200**



**MODEL 681 - 302MR - rating C200**



**MODEL 681 - 402MR - rating C200**