

# CURRENT TRANSFORMER

Model 675

Window Diameter 2.61"

**APPLICATION:**  
Relaying and metering.

**FREQUENCY:**  
50-400 Hz.

**INSULATION LEVEL:**  
0.6 kV, BIL 10 kV full wave.  
REGULATORY AGENCY APPROVALS

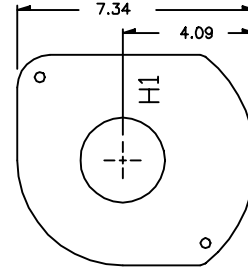
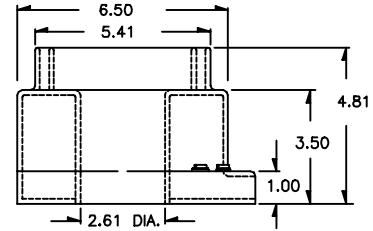
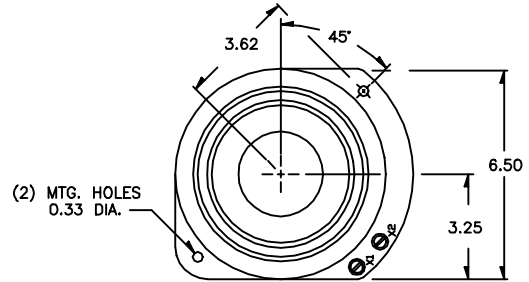
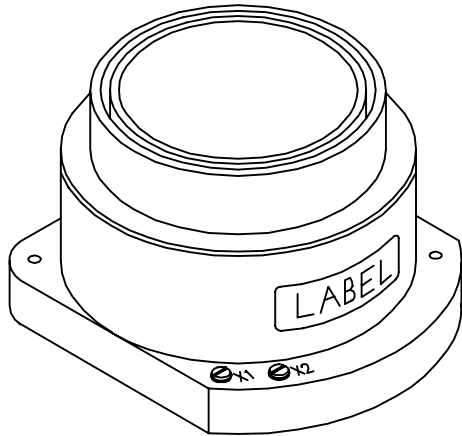


Manufactured to meet the requirements of ANSI/IEEE C57.13.  
Classified by U.L. in accordance with IEC 44-1.

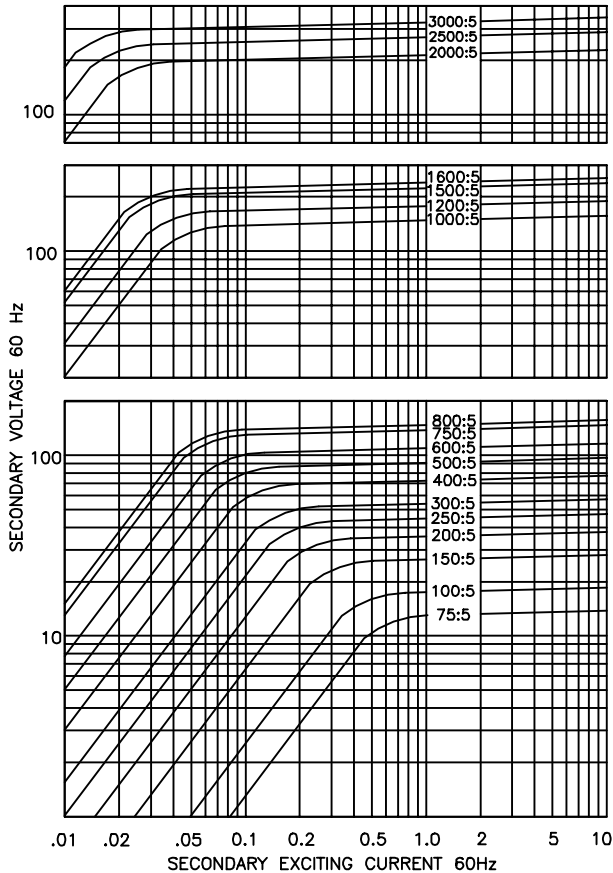
## CONTINUOUS THERMAL CURRENT RATING FACTOR:

1.33 at 30°C. amb., 1.0 at 55°C. amb.

- Secondary terminals are brass screws No. 10-32 with one flatwasher & lockwasher.
- Multi-ratios available on request.
- Approximate weight 10 lbs.



EXCITATION CURVE



CATALOG NUMBER	CURRENT RATIO	RELAY CLASS	ANSI METERING CLASS AT 60 Hz					SECONDARY WINDING RESISTANCE (OHMS @ 75 °C)
			B0.1	B0.2	B0.5	B0.9	B1.8	
675-750	75:5	C 10	0.6	1.2	-	-	-	0.038
675-101	100:5	C 10	0.6	0.6	-	-	-	0.052
675-151	150:5	C 20	0.3	0.6	0.6	1.2	-	0.078
675-201	200:5	C 20	0.3	0.3	0.6	1.2	2.4	0.104
675-251	250:5	C 20	0.3	0.3	0.6	0.6	1.2	0.130
675-301	300:5	C 50	0.3	0.3	0.3	0.6	1.2	0.156
675-401	400:5	C 50	0.3	0.3	0.3	0.6	0.6	0.208
675-501	500:5	C 50	0.3	0.3	0.3	0.3	0.6	0.260
675-601	600:5	C100	0.3	0.3	0.3	0.3	0.3	0.313
675-751	750:5	C100	0.3	0.3	0.3	0.3	0.3	0.391
675-801	800:5	C100	0.3	0.3	0.3	0.3	0.3	0.417
675-102	1000:5	C100	0.3	0.3	0.3	0.3	0.3	0.500
675-122	1200:5	C100	0.3	0.3	0.3	0.3	0.3	0.600
675-152	1500:5	C200	0.3	0.3	0.3	0.3	0.3	0.750
675-162	1600:5	C200	0.3	0.3	0.3	0.3	0.3	0.800
675-202	2000:5	C200	0.3	0.3	0.3	0.3	0.3	0.953
675-252	2500:5	C200	0.3	0.3	0.3	0.3	0.3	1.191
675-302	3000:5	C200	0.3	0.3	0.3	0.3	0.3	1.791