

# CURRENT TRANSFORMER

## Model 353M

Window Diameter 3.05"

### APPLICATION:

Metering.

### FREQUENCY:

50-400 Hz.

### INSULATION LEVEL:

0.6 kV, BIL 10 kV full wave.

REGULATORY AGENCY APPROVALS



Manufactured to meet the requirements of ANSI/IEEE C57.13.

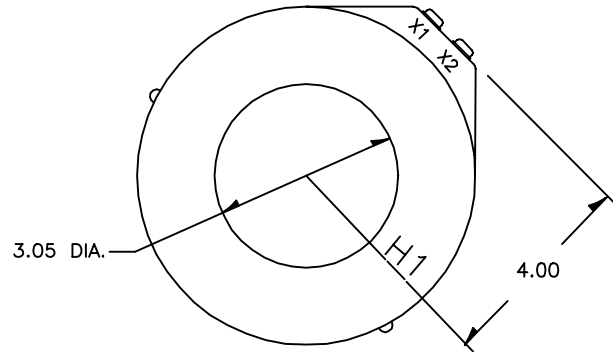
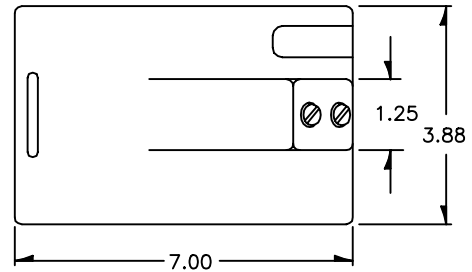
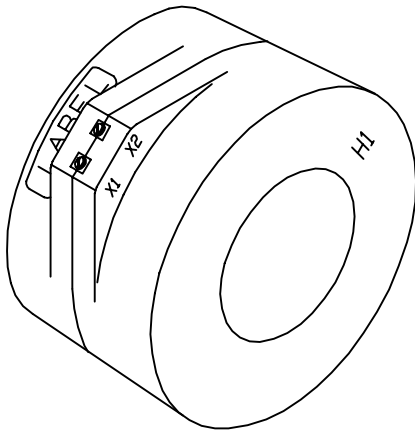
Classified by U.L. in accordance with IEC 44-1.

Approved for revenue metering by Industry Canada. AE-0653

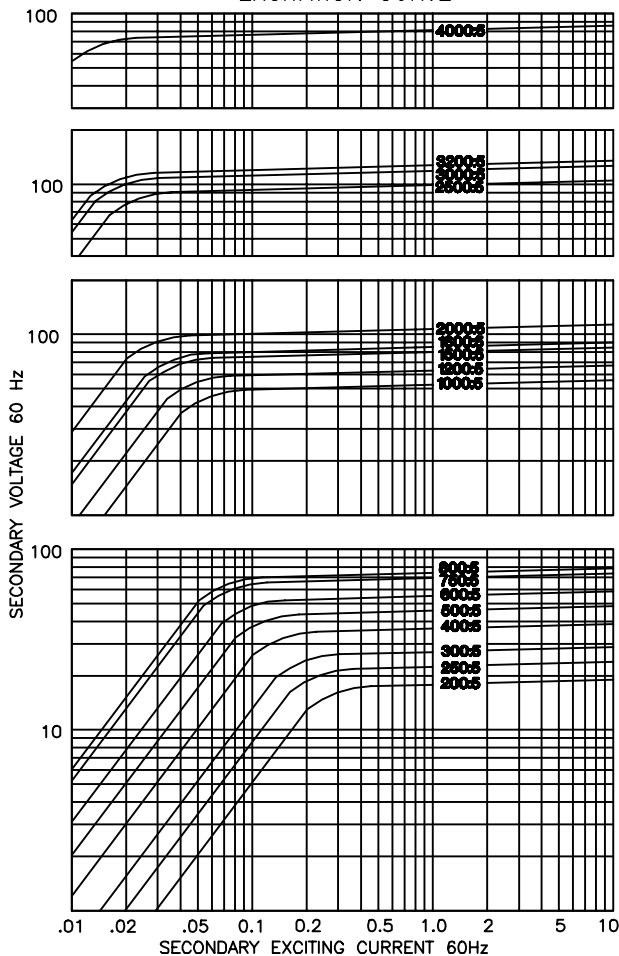
### CONTINUOUS THERMAL CURRENT RATING FACTOR:

1.33 at 30°C amb., 1.0 at 55°C amb.

- Secondary terminals are brass screws No. 10-32 with one flatwasher and lockwasher.
- Approximate weight 12 lbs.



EXCITATION CURVE



CATALOG NUMBER	CURRENT RATIO	ANSI METERING CLASS AT 60 Hz					SECONDARY WINDING RESISTANCE (OHMS @ 75 °C)
		B0.1	B0.2	B0.5	B0.9	B1.8	
353M-201	200:5	0.6	0.6	1.2	2.4	-	0.061
353M-251	250:5	0.6	0.6	0.6	1.2	2.4	0.069
353M-301	300:5	0.3	0.6	1.2	1.2	2.4	0.110
353M-401	400:5	0.3	0.3	0.6	0.6	1.2	0.126
353M-501	500:5	0.3	0.3	0.3	0.3	0.6	0.139
353M-601	600:5	0.3	0.3	0.3	0.3	0.3	0.146
353M-751	750:5	0.3	0.3	0.3	0.3	0.3	0.237
353M-801	800:5	0.3	0.3	0.3	0.3	0.3	0.260
353M-102	1000:5	0.3	0.3	0.6	0.6	1.2	0.297
353M-122	1200:5	0.3	0.3	0.3	0.6	1.2	0.356
353M-152	1500:5	0.3	0.3	0.3	0.3	0.6	0.445
353M-162	1600:5	0.3	0.3	0.3	0.3	0.6	0.475
353M-202	2000:5	0.3	0.3	0.3	0.3	0.6	0.593
353M-252	2500:5	0.3	0.3	0.3	0.3	0.3	0.725
353M-302	3000:5	0.3	0.3	0.3	0.3	0.3	0.871
353M-322	3200:5	0.3	0.3	0.3	0.3	0.3	0.929
353M-402	4000:5	0.3	0.3	0.3	0.3	0.3	1.007