

CURRENT TRANSFORMER

Model 352M

Window Diameter 3.19"

APPLICATION:
Metering.

FREQUENCY:
50-400 Hz.

INSULATION LEVEL:
0.6 kV, BIL 10 kV full wave.

REGULATORY AGENCY APPROVALS



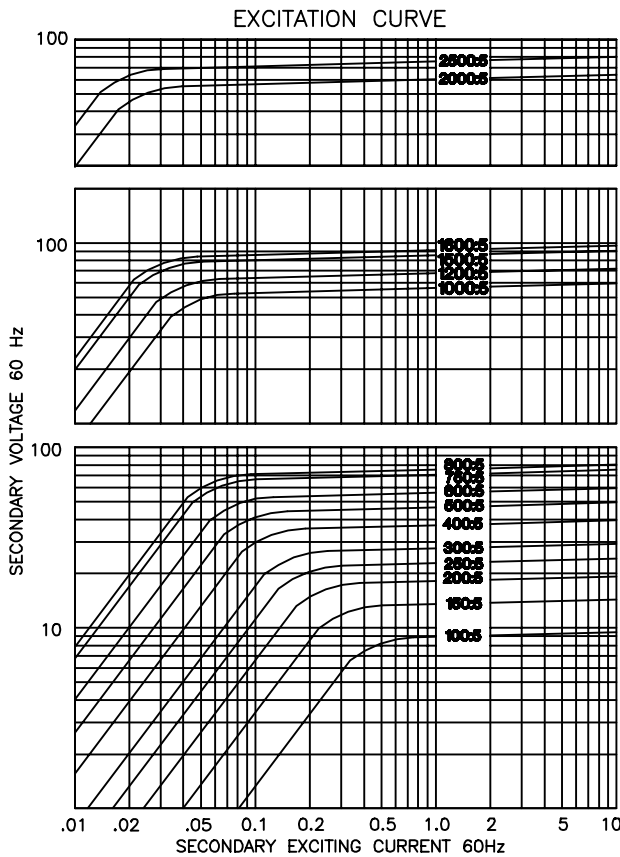
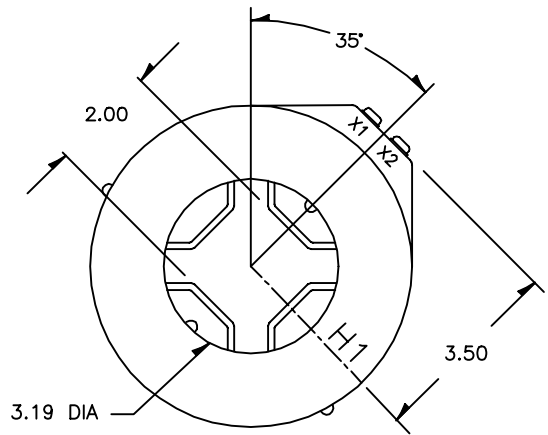
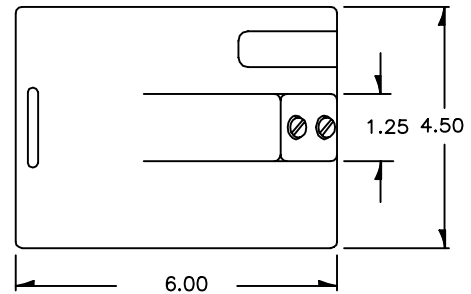
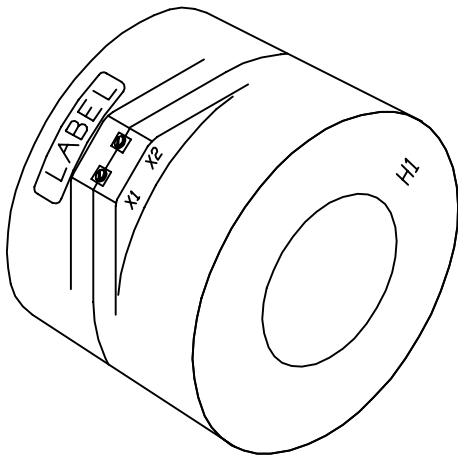
Manufactured to meet the requirements of ANSI/IEEE C57.13.
Classified by U.L. in accordance with IEC 44-1.

Approved for revenue metering by Industry Canada. AE-0660(*)

CONTINUOUS THERMAL CURRENT RATING FACTOR:

1.33 at 30°C amb., 1.0 at 55°C amb.

- Secondary terminals are brass screws No. 10-32 with one flatwasher and lockwasher.
- Window opening to accommodate 3.00" X 0.50" bus, horizontal or vertical.
- Approximate weight 8 lbs.



CATALOG NUMBER	CURRENT RATIO	ANSI METERING CLASS AT 60 Hz					SECONDARY WINDING RESISTANCE (OHMS @ 75 °C)
		B0.1	B0.2	B0.5	B0.9	B1.8	
352M-101	100:5	1.2	2.4	-	-	-	0.034
352M-151	150:5	1.2	2.4	-	-	-	0.060
352M-201	200:5	1.2	1.2	-	-	-	0.080
352M-251	250:5 *	0.6	1.2	-	-	-	0.100
352M-301	300:5 *	0.6	0.6	1.2	-	-	0.121
352M-401	400:5 *	0.6	0.6	1.2	-	-	0.161
352M-501	500:5 *	0.6	0.6	0.6	-	-	0.201
352M-601	600:5 *	0.3	0.6	0.6	1.2	-	0.241
352M-751	750:5 *	0.3	0.3	0.6	0.6	-	0.301
352M-801	800:5 *	0.3	0.3	0.6	0.6	-	0.322
352M-102	1000:5 *	0.3	0.3	0.3	0.6	1.2	0.360
352M-122	1200:5 *	0.3	0.3	0.3	0.6	1.2	0.432
352M-152	1500:5 *	0.3	0.3	0.3	0.3	0.6	0.541
352M-162	1600:5 *	0.3	0.3	0.3	0.3	0.6	0.577
352M-202	2000:5 *	0.3	0.3	0.3	0.3	0.6	0.647
352M-252	2500:5 *	0.3	0.3	0.3	0.3	0.3	0.808