

CURRENT TRANSFORMER

Model 351M

Window Diameter 1.63"

APPLICATION:
Metering.

FREQUENCY:
50–400 Hz.

INSULATION LEVEL:
0.6 kV, BIL 10 kV full wave.

REGULATORY AGENCY APPROVALS

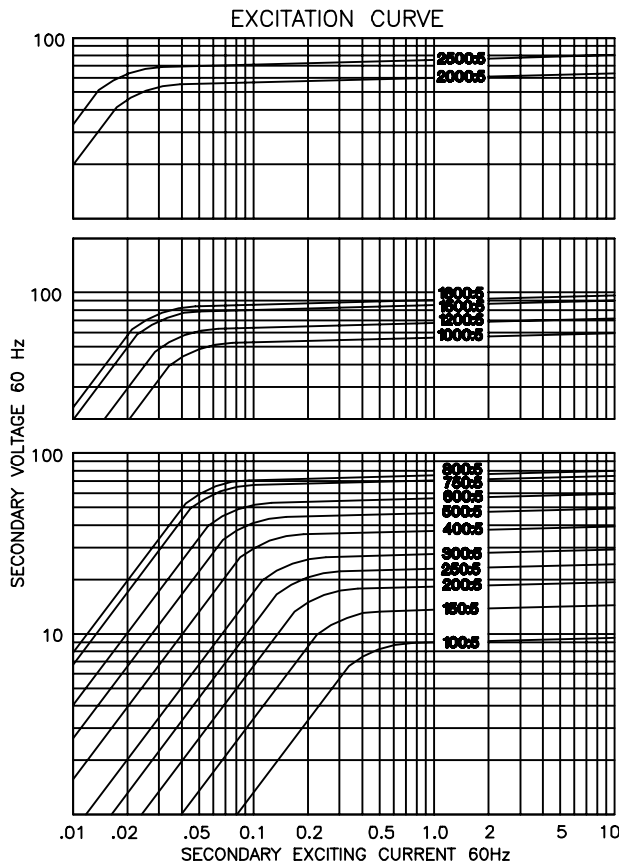
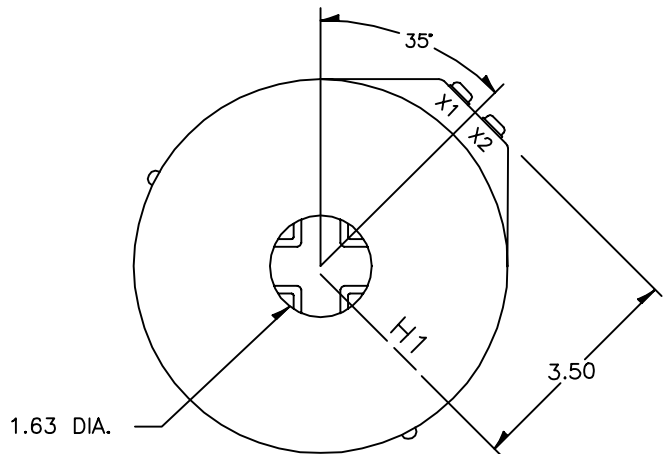
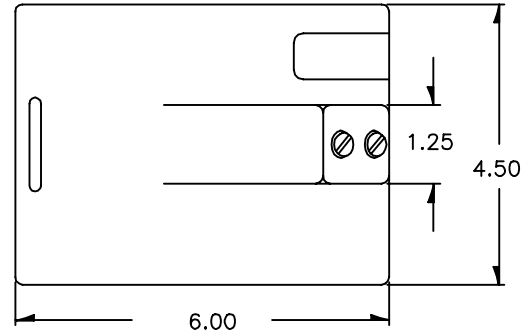
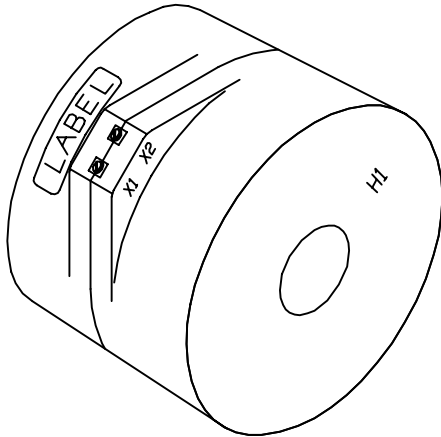


Manufactured to meet the requirements of ANSI/IEEE C57.13.
Classified by U.L. in accordance with IEC 44-1.

Approved for revenue metering by Industry Canada. AE-0660(*)

CONTINUOUS THERMAL CURRENT RATING FACTOR:
1.33 at 30°C amb., 1.0 at 55°C amb.

- Secondary terminals are brass screws No. 10–32 with one flatwasher and lockwasher.
- Window opening to accommodate 1.50" X 0.50" bus, horizontal or vertical.
- Approximate weight 12 lbs.



CATALOG NUMBER	CURRENT RATIO	ANSI METERING CLASS AT 60 Hz					SECONDARY WINDING RESISTANCE (OHMS @ 75 °C)
		B0.1	B0.2	B0.5	B0.9	B1.8	
351M-101	100:5	1.2	2.4	—	—	—	0.034
351M-151	150:5	1.2	2.4	—	—	—	0.060
351M-201	200:5	1.2	1.2	—	—	—	0.080
351M-251	250:5 *	0.6	1.2	—	—	—	0.100
351M-301	300:5 *	0.6	0.6	1.2	—	—	0.121
351M-401	400:5 *	0.6	0.6	1.2	—	—	0.161
351M-501	500:5 *	0.6	0.6	0.6	—	—	0.201
351M-601	600:5 *	0.3	0.6	0.6	1.2	—	0.241
351M-751	750:5 *	0.3	0.3	0.6	0.6	—	0.301
351M-801	800:5 *	0.3	0.3	0.6	0.6	—	0.322
351M-102	1000:5 *	0.3	0.3	0.3	0.6	1.2	0.360
351M-122	1200:5 *	0.3	0.3	0.3	0.6	1.2	0.432
351M-152	1500:5 *	0.3	0.3	0.3	0.3	0.6	0.541
351M-162	1600:5 *	0.3	0.3	0.3	0.3	0.6	0.577
351M-202	2000:5 *	0.3	0.3	0.3	0.3	0.6	0.647
351M-252	2500:5 *	0.3	0.3	0.3	0.3	0.3	0.808