

CURRENT TRANSFORMER

Model 350

Window Diameter 3.31"

APPLICATION:
Metering.

FREQUENCY:
50-400 Hz.

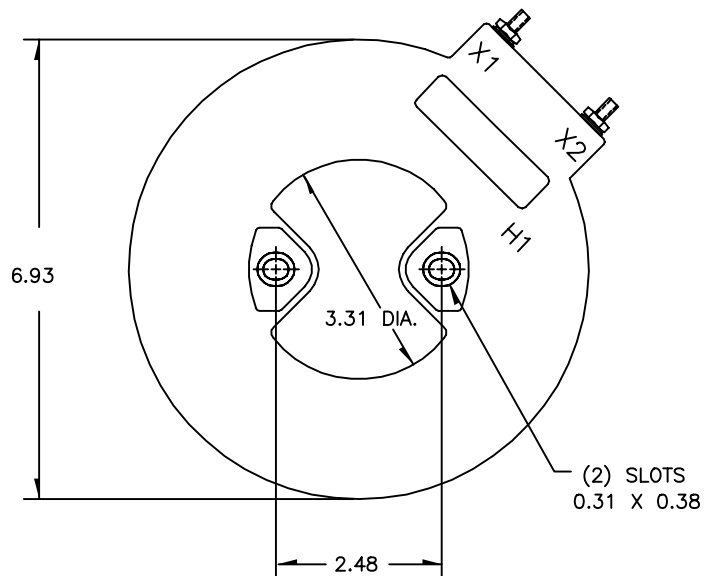
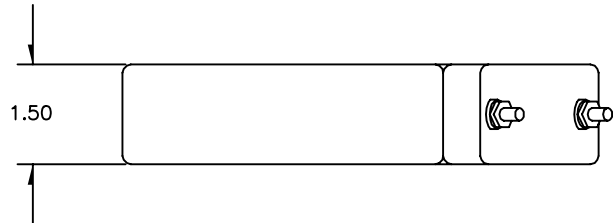
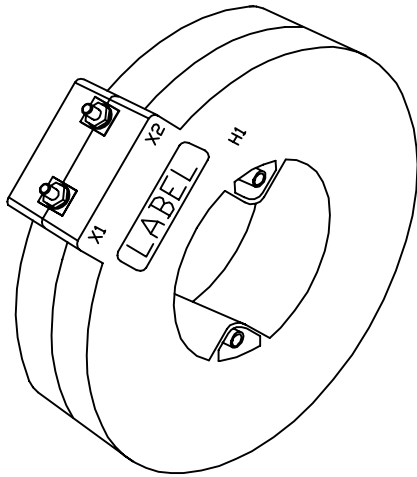
INSULATION LEVEL:
0.6 kV, BIL 10 kV full wave.
REGULATORY AGENCY APPROVALS



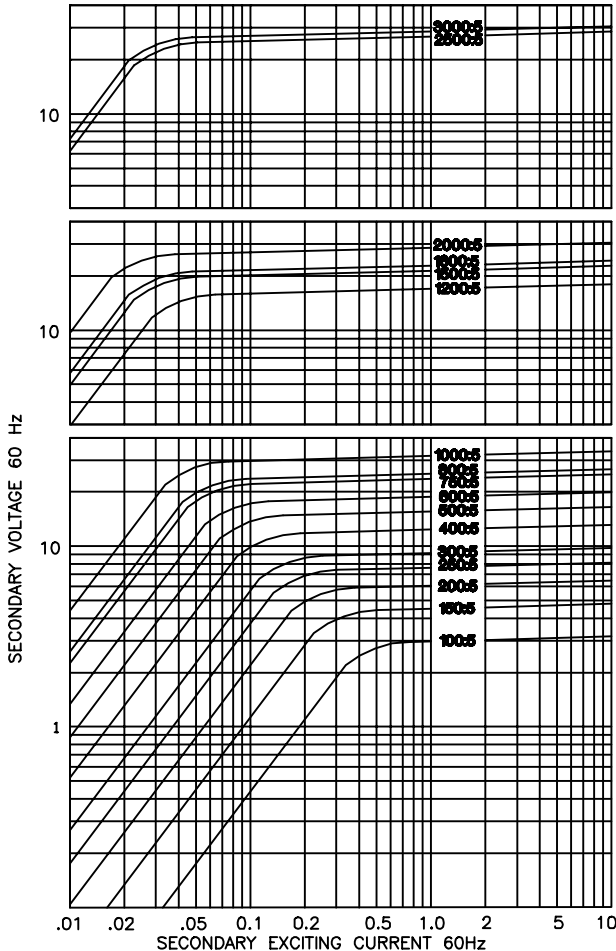
Manufactured to meet the requirements of ANSI/IEEE C57.13.
Classified by U.L. in accordance with IEC 44-1.
Approved for revenue metering by Industry Canada. AE-0647(*)

CONTINUOUS THERMAL CURRENT RATING FACTOR:
1.33 at 30°C amb., 1.0 at 55°C amb.

- Secondary terminals are No. 8-32 brass studs with one flatwasher, lockwasher and regular nut.
- Approximate weight 2.5 lbs.



EXCITATION CURVE



CATALOG NUMBER	CURRENT RATIO	VA FOR 1% CLASS	ANSI METERING CLASS AT 60 Hz					SECONDARY WINDING RESISTANCE (OHMS @ 75 °C)
			B0.1	B0.2	B0.5	B0.9	B1.8	
350-101	100:5	1.5	1.2	-	-	-	-	0.024
350-151	150:5	2.5	1.2	-	-	-	-	0.040
350-201	200:5	5.0	1.2	1.2	-	-	-	0.053
350-251	250:5 *	7.5	0.6	1.2	2.4	-	-	0.066
350-301	300:5 *	15	0.6	0.6	1.2	2.4	-	0.079
350-401	400:5 *	25	0.3	0.6	1.2	1.2	-	0.106
350-501	500:5 *	35	0.3	0.3	0.6	1.2	2.4	0.132
350-601	600:5 *	50	0.3	0.3	0.6	1.2	1.2	0.159
350-751	750:5 *	50	0.3	0.3	0.3	0.6	1.2	0.199
350-801	800:5 *	60	0.3	0.3	0.3	0.6	1.2	0.212
350-102	1000:5 *	75	0.3	0.3	0.3	0.6	0.6	0.265
350-122	1200:5 *	75	0.3	0.3	0.3	0.3	0.6	0.224
350-152	1500:5 *	90	0.3	0.3	0.3	0.3	0.6	0.254
350-162	1600:5 *	100	0.3	0.3	0.3	0.3	0.3	0.271
350-202	2000:5 *	120	0.3	0.3	0.3	0.3	0.3	0.339
350-252	2500:5 *	50	0.3	0.3	0.3	0.3	0.3	0.356
350-302	3000:5 *	60	0.3	0.3	0.3	0.3	0.3	0.428