

# CURRENT TRANSFORMER

## Model 180

Window Diameter 2.50"

**APPLICATION:**  
Metering.

**FREQUENCY:**  
50-400 Hz.

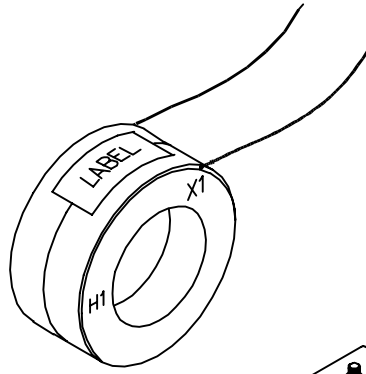
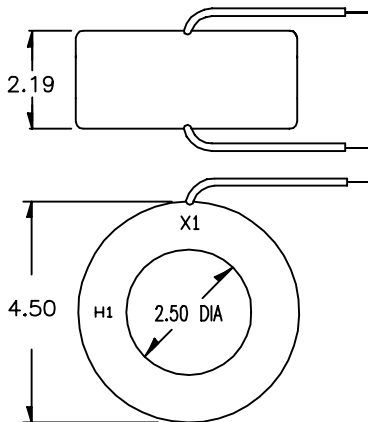
**INSULATION LEVEL:**  
600 Volts, 10 kV BIL full wave.

REGULATORY AGENCY APPROVALS

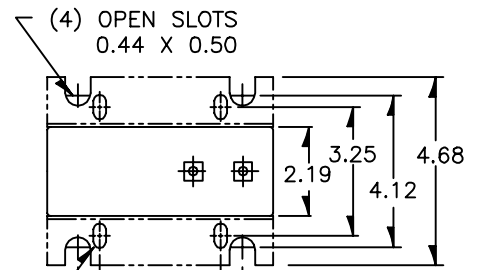


Manufactured to meet the requirements of ANSI/IEEE C57.13.  
Classified by U.L. in accordance with IEC 44-1  
Approved for revenue metering by Industry Canada. No. T-189(\*)

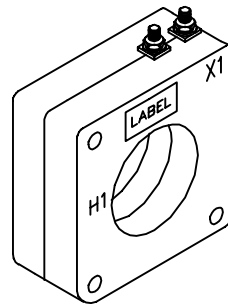
- Terminals are brass studs No. 8-32 UNC with one flatwasher, lockwasher and regular nut.
- Flexible leads are UL 1015 105°C. CSA approved, #16 AWG, 24" long.
- Non-standard lead length can be specified.
- Order mounting bracket kit 0221B00777 separately for Model 180SHT.
- Approximate weight 3.5 lbs.



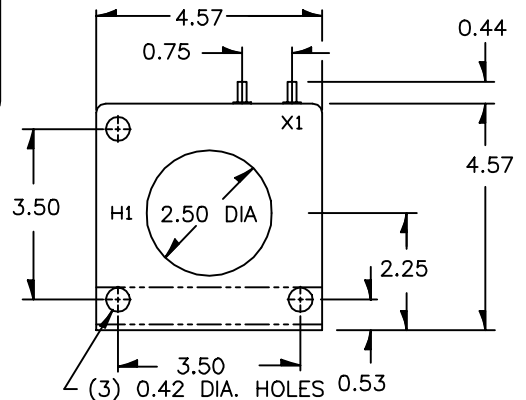
180 RL



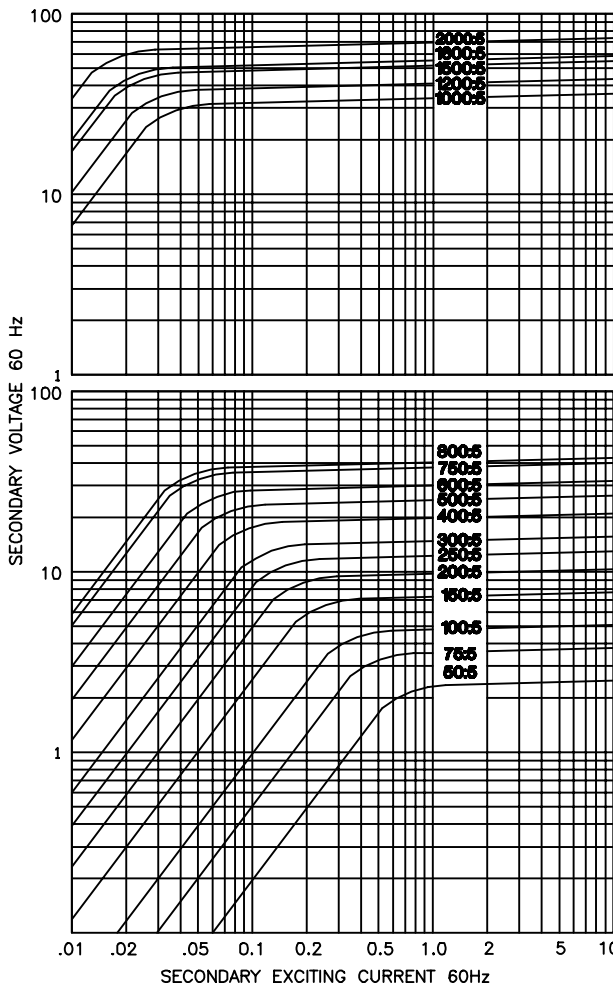
(4) 0.22 X 0.50 CLOSED SLOTS



180 SHT



EXCITATION CURVE



CATALOG NUMBER	CURRENT RATIO	V.A. FOR ±1% CLASS	ANSI METERING CLASS AT 60 Hz					SECONDARY WINDING RESISTANCE (OHMS @ 75 °C)	CONTINUOUS THERMAL RATING FACTOR	
			B0.1	B0.2	B0.5	B0.9	B1.8		@30°C	@55°C
180**-500	50:5	1.5	4.8	-	-	-	-	0.014	2.0	2.0
180**-750	75:5	2.5	1.2	2.4	-	-	-	0.021	2.0	2.0
180**-101	100:5	2.5	1.2	2.4	4.8	-	-	0.033	2.0	2.0
180**-151	150:5 *	5.0	0.6	0.6	2.4	4.8	4.8	0.050	2.0	2.0
180**-201	200:5 *	12.5	0.3	0.3	1.2	2.4	4.8	0.065	2.0	2.0
180**-251	250:5 *	12.5	0.3	0.3	0.6	1.2	2.4	0.084	2.0	1.5
180**-301	300:5 *	25.0	0.3	0.3	0.6	1.2	2.4	0.101	2.0	1.5
180**-401	400:5 *	50.0	0.3	0.3	0.3	0.6	1.2	0.130	1.5	1.33
180**-501	500:5 *	50.0	0.3	0.3	0.3	0.6	0.6	0.189	1.5	1.0
180**-601	600:5 *	50.0	0.3	0.3	0.3	0.3	0.6	0.226	1.33	1.0
180**-751	750:5 *	50.0	0.3	0.3	0.3	0.3	0.6	0.283	1.0	0.8
180**-801	800:5 *	75.0	0.3	0.3	0.3	0.3	0.3	0.302	1.0	0.8
180**-102	1000:5 *	100.0	0.3	0.3	0.3	0.3	0.3	0.354	1.0	0.8
180**-122	1200:5 *	125.0	0.3	0.3	0.3	0.3	0.3	0.425	1.0	0.8
180**-152	1500:5 *	160.0	0.3	0.3	0.3	0.3	0.3	0.531	1.0	0.6
180**-162	1600:5 *	175.0	0.3	0.3	0.3	0.3	0.3	0.566	1.0	0.6
180**-202	2000:5 *	200.0	0.3	0.3	0.3	0.3	0.3	0.627	0.8	0.6

\*\* NOTE: When ordering, prefix catalog number with model designation required, i.e. 180RL-301, 180SHT-301, etc.