

# CURRENT TRANSFORMER

**Model 147**

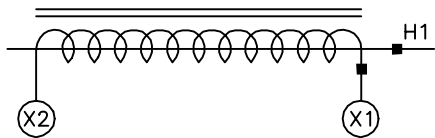
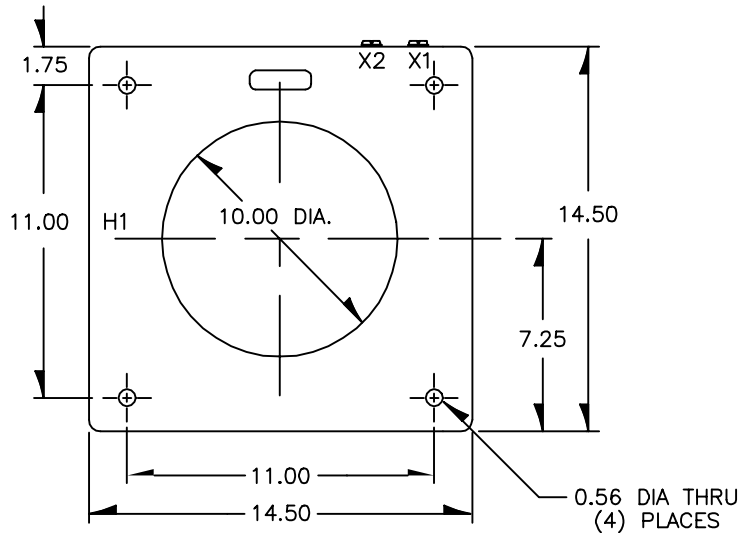
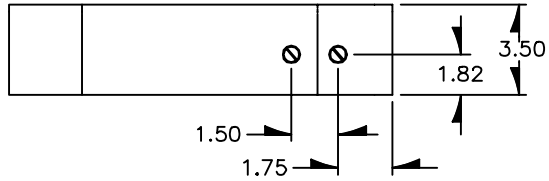
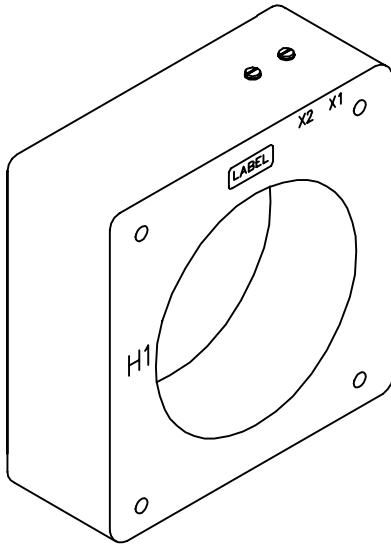
*Window Diameter 10.00"*

**APPLICATION:**  
Relaying.

**FREQUENCY:**  
50-60Hz

**INSULATION LEVEL:**  
0.6 kV, BIL 10 kV full wave.

- Terminals are brass screws No.10-32 with one flatwasher and lockwasher.
- Short time thermal rating factor: 100 X rated primary current for 1 second.
- For indoor service, resin encapsulated in black plastic case.
- Approximate weight 50 lbs.



CONNECTION DIAGRAM

CATALOG NUMBER	CURRENT RATIO	RELAY CLASS	ANSI METERING CLASS AT 60 Hz					RATING FACTOR AT 30°C AMBIENT	SECONDARY WINDING RESISTANCE (OHMS @ 75°C)
			B0.1	B0.2	B0.5	B0.9	B1.8		
147-202	2000:5	C200	0.3	0.3	0.3	0.3	0.3	2.0	0.414
147-252	2500:5	C200	0.3	0.3	0.3	0.3	0.3	2.0	0.447
147-302	3000:5	C200	0.3	0.3	0.3	0.3	0.3	2.0	0.495
147-402	4000:5	C200	0.3	0.3	0.3	0.3	0.3	2.0	0.707
147-502	5000:5	C200	0.3	0.3	0.3	0.3	0.3	2.0	0.745
147-602	6000:5	C200	0.3	0.3	0.3	0.3	0.3	1.5	0.975
147-802	8000:5	C200	0.3	0.3	0.3	0.3	0.3	1.0	1.970
147-103	10000:5	C200	0.3	0.3	0.3	0.3	0.3	1.0	2.190