

CURRENT TRANSFORMER

Model 145MR

Window Diameter 6.00"

REGULATORY AGENCY APPROVALS



Manufactured to meet the requirements of ANSI/IEEE C57.13.

Classified by U.L. in accordance with IEC 44-1

Approved for revenue metering by Industry Canada. No. AE-0651

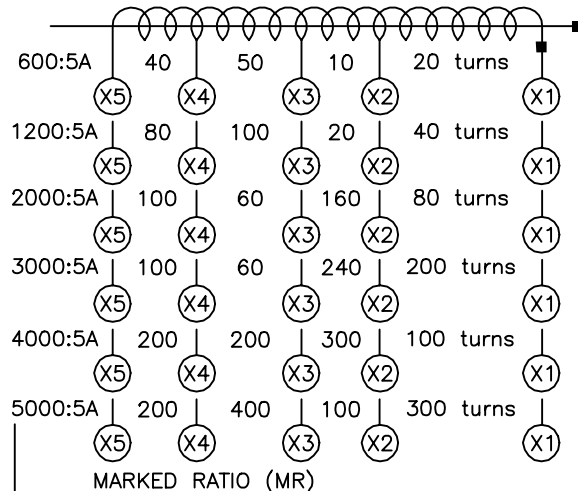
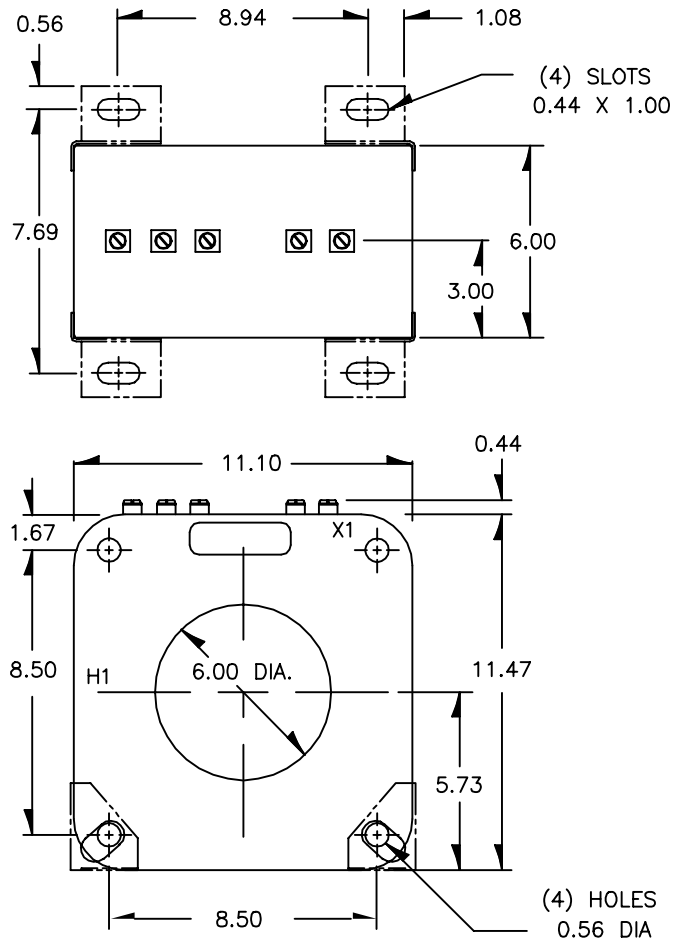
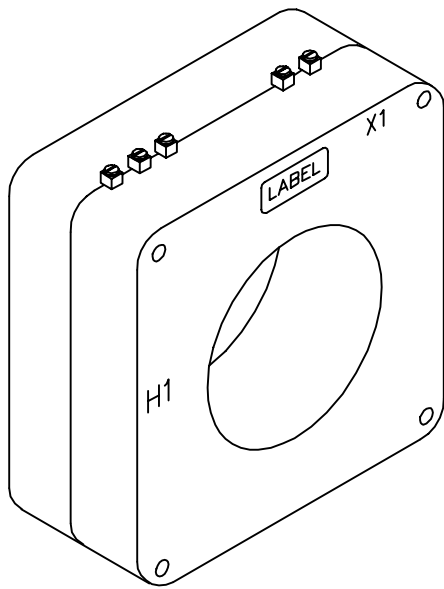
APPLICATION:
Relaying.

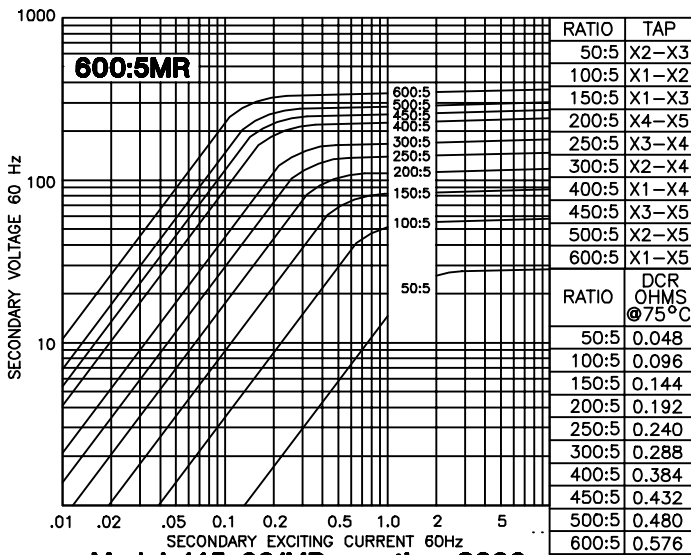
FREQUENCY:
50-400Hz

INSULATION LEVEL:
0.6 kV, BIL 10 kV full wave.

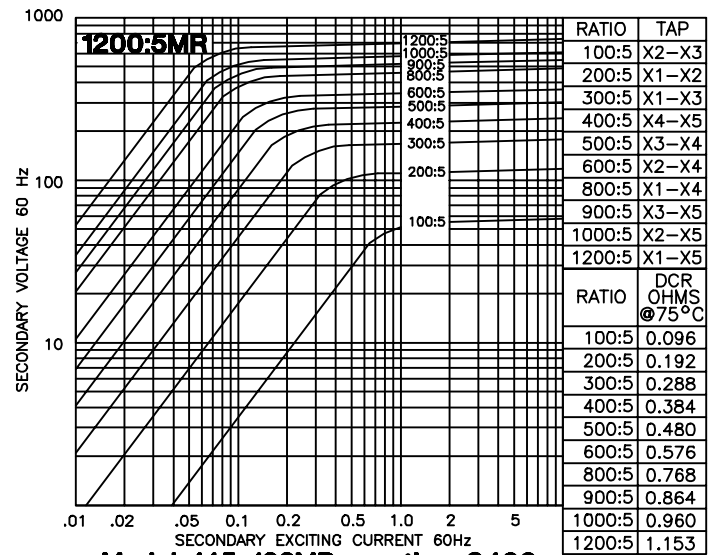
CONTINUOUS THERMAL CURRENT RATING FACTOR:
See TRF at curves.

- Terminals are brass screws No.10-32 with one flatwasher and lockwasher.
- The transformer winding is arranged so that the turns are fully distributed between all taps.
- Order Mounting Bracket Kit No. 0221B00775 separately.
- Approximate weight 85 lbs.

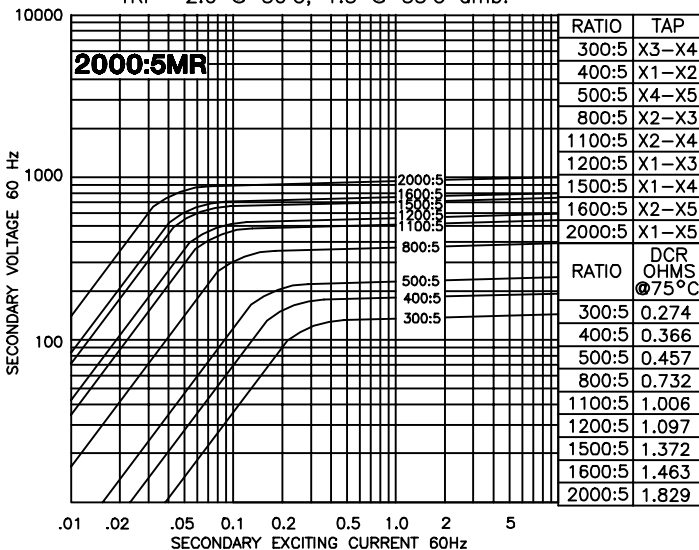




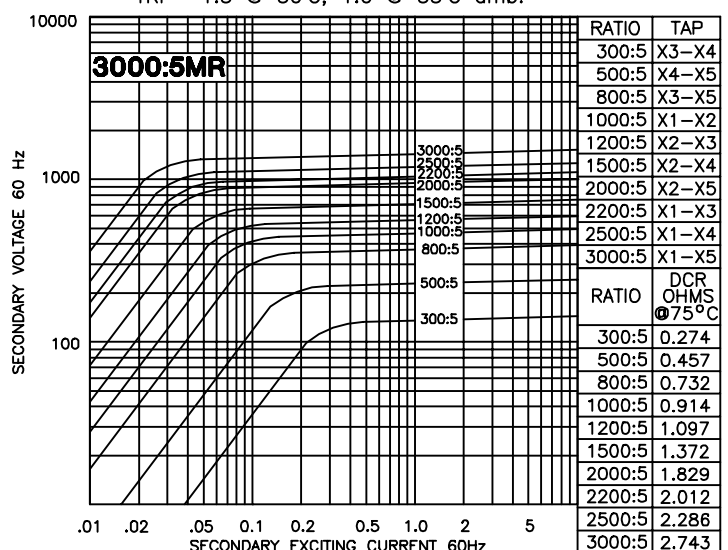
Model 145-601MR - rating C200
TRF= 2.0 @ 30°C, 1.5 @ 55°C amb.



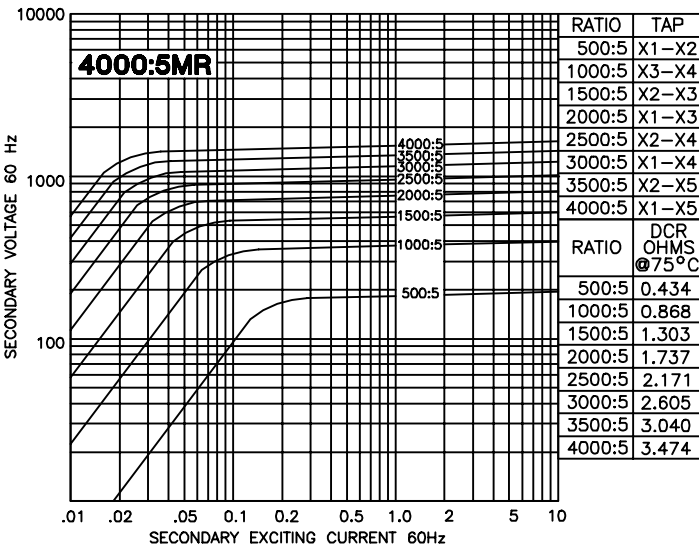
Model 145-122MR - rating C400
TRF= 1.5 @ 30°C, 1.0 @ 55°C amb.



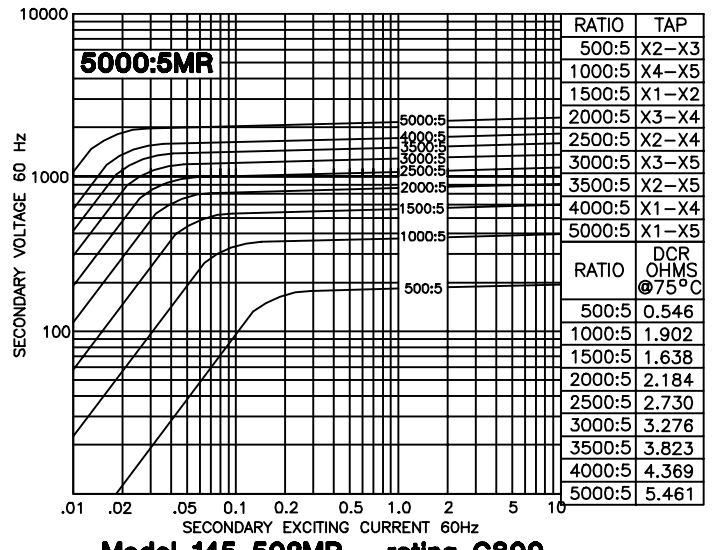
Model 145-202MR - rating C800
TRF= 1.33 @ 30°C, 1.0 @ 55°C amb.



Model 145-302MR - rating C800
TRF= 1.0 @ 30°C, 0.8 @ 55°C amb.



Model 145-402MR - rating C800
TRF= 1.0 @ 30°C, 0.6 @ 55°C amb.



Model 145-502MR - rating C800
TRF= 0.8 @ 30°C, 0.6 @ 55°C amb.