

CURRENT TRANSFORMER

Model 19

Window Diameter 4.25"

APPLICATION:
Metering.

FREQUENCY:
50-400 Hz.

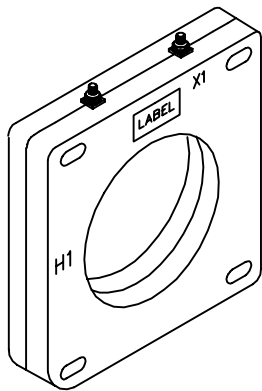
INSULATION LEVEL:
600V, 10 kV BIL full wave.

REGULATORY AGENCY APPROVALS

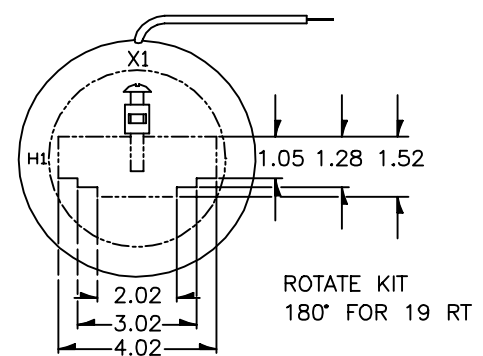
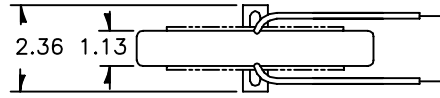
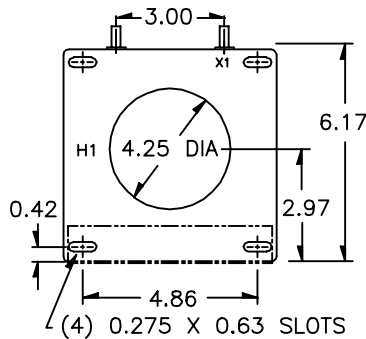
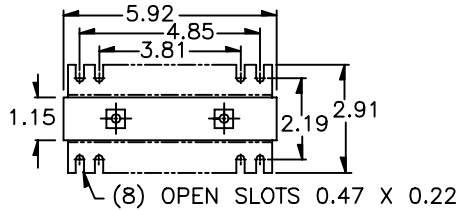


Manufactured to meet the requirements of ANSI/IEEE C57.13.
Classified by U.L. in accordance with IEC 44-1

- SHT terminals are brass studs No. 8-32 with one flatwasher, lockwasher and regular nut.
- RT terminals are brass studs No. 10-32 with one flatwasher, lockwasher and regular nut.
- Flexible leads are UL 1015, 105°C CSA approved, #16AWG, 24" long.
- Non-standard lead length can be specified
- Order mounting bracket kit 0221B00183 separately for Model 19SHT.
- Order bus bar mounting kit 0221A26075 separately, factory installed.
- Approximate weight 3 lbs.

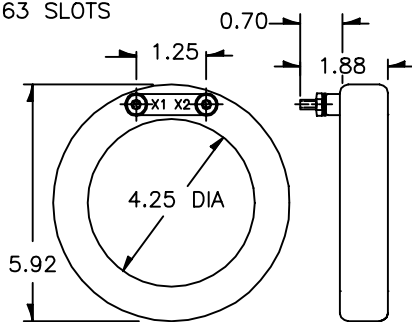
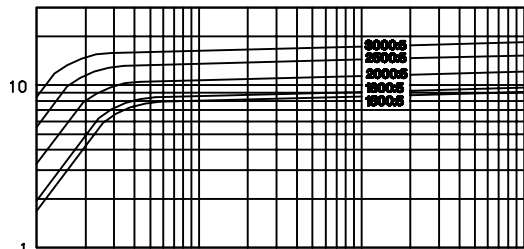


19 SHT

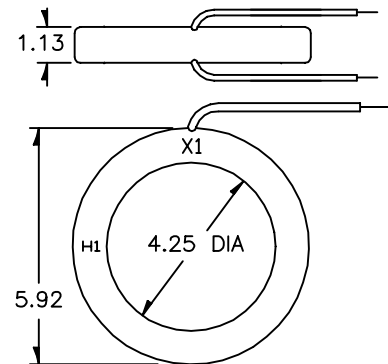


19 RL (BUS BAR MOUNTING KIT SHOWN)

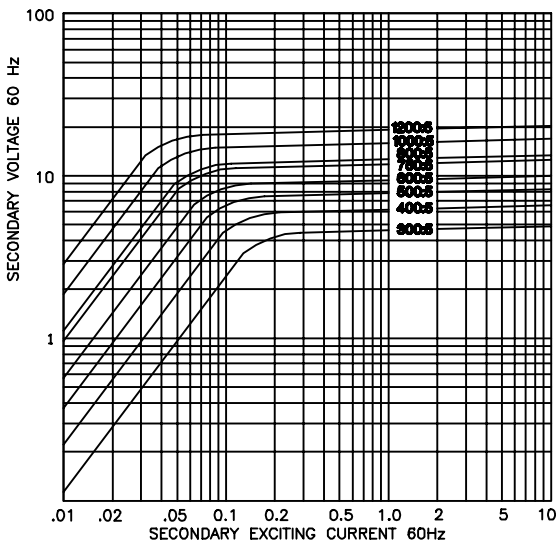
EXCITATION CURVE



19 RT



19 RL



CATALOG NUMBER	CURRENT RATIO	VA FOR ±1% CLASS	ANSI METERING CLASS AT 60 Hz					SECONDARY WINDING RESISTANCE (OHMS @ 75°C)	CONTINUOUS THERMAL RATING FACTOR	
			B0.1	B0.2	B0.5	B0.9	B1.8		@30°C	@55°C
19 **-301	300:5	4.0	0.6	0.6	2.4	2.4	4.8	0.048	2.0	2.0
19 **-401	400:5	10.0	0.3	0.3	1.2	2.4	2.4	0.064	2.0	2.0
19 **-501	500:5	15.0	0.3	0.3	0.6	1.2	2.4	0.087	2.0	1.5
19 **-601	600:5	15.0	0.3	0.3	0.6	1.2	1.2	0.116	2.0	1.5
19 **-751	750:5	25.0	0.3	0.3	0.3	0.6	1.2	0.145	1.5	1.33
19 **-801	800:5	30.0	0.3	0.3	0.3	0.6	1.2	0.155	1.5	1.33
19 **-102	1000:5	30.0	0.3	0.3	0.3	0.6	1.2	0.242	1.33	1.0
19 **-122	1200:5	40.0	0.3	0.3	0.3	0.3	0.6	0.291	1.33	1.0
19 **-152	1500:5	15.0	0.3	0.3	0.6	0.6	0.6	0.200	1.5	1.0
19 **-162	1600:5	15.0	0.3	0.3	0.3	0.6	0.6	0.213	1.5	1.0
19 **-202	2000:5	20.0	0.3	0.3	0.3	0.3	0.6	0.266	1.33	1.0
19 **-252	2500:5	20.0	0.3	0.3	0.3	0.3	0.3	0.333	1.0	0.8
19 **-302	3000:5	25.0	0.3	0.3	0.3	0.3	0.3	0.399	1.0	0.8

** NOTE: When ordering, prefix catalog number with model designation required. i.e. 19RL-301, or 19SHT-301 etc.