

CURRENT TRANSFORMERS

Model 58

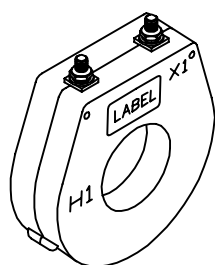
Window Diameter 1.25"

APPLICATION:
With ammeters, wattmeters, and cross current compensation.

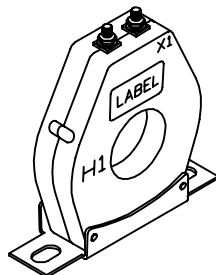
FREQUENCY:
50-400 Hz.

INSULATION LEVEL:
600 Volts, 10 kV BIL full wave.

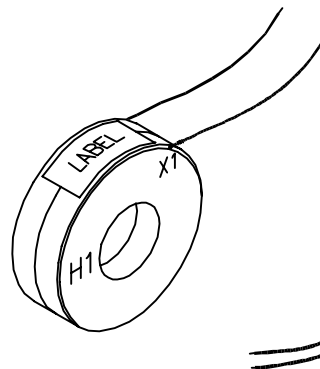
- Flexible leads are UL 1015 105 ° C, CSA approved, #16 AWG, 24" long.
- Non-standard length to be specified.
- Terminals are brass studs No. 8-32 UNC with one flat washer, lockwasher and regular nut.
- Approximate weight: 1.3 lbs.



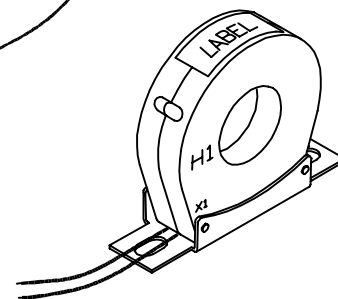
58RT



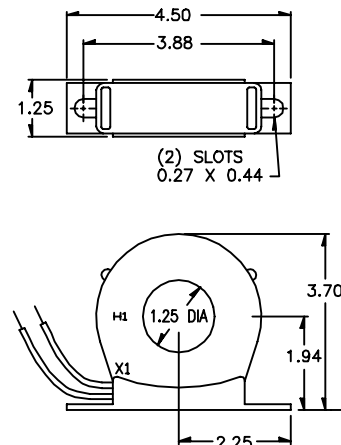
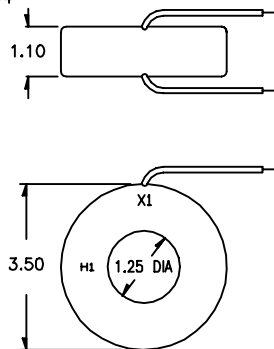
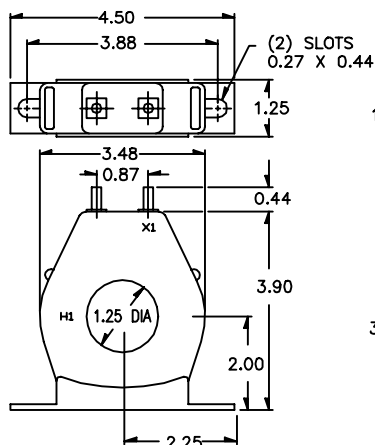
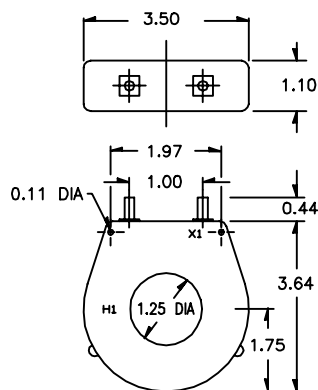
58RBT



58RL



58RBL



CATALOG NUMBER	CURRENT RATIO	ACCURACY AT 60 Hz	BURDEN VA at 60 Hz
58**-500	50:5	± 3 %	1.5
58**-600	60:5	± 2 %	2.5
58**-750	75:5	± 1.5 %	2.5
58**-800	80:5	± 1 %	2.5
58**-101	100:5	± 1.5 %	5.0
58**-121	120:5	± 1 %	5.0
58**-1250	125:5	± 1 %	6.0
58**-151	150:5	± 1 %	7.5

CATALOG NUMBER	CURRENT RATIO	ACCURACY AT 60 Hz	BURDEN VA at 60 Hz
58**-201	200:5	± 1 %	12.5
58**-251	250:5	± 1 %	12.5
58**-301	300:5	± 1 %	15.0
58**-401	400:5	± 1 %	25.0
58**-501	500:5	± 1 %	25.0
58**-601	600:5	± 1 %	25.0
58**-751	750:5	± 1 %	25.0
58**-801	800:5	± 1 %	25.0

** NOTE: When ordering, prefix Cat No. with model designation required, i.e. 58RL-101, 58RBL-251, etc.