

CURRENT TRANSFORMERS

Models 11, 12 & 13

*Window Diameters
0.26", 0.37", & 0.56"*

These three lightweight, miniature current transformers are suitable for direct mounting on printed circuit boards. Model 13 is provided with standard hexagon nuts, to secure the transformer to the board so that the assembly can withstand vibration and shock while maintaining electrical integrity. The graphs below illustrate the voltage output capacity of each, and over the ranges shown, will maintain $\pm 3\%$ linearity.

APPLICATION:

For current to voltage conversion by use of a loading resistor.

FREQUENCY:

50-400 Hz.

INSULATION LEVEL:

600 Volts, 10 kV BIL full wave

CONTINUOUS THERMAL CURRENT RATING FACTOR:

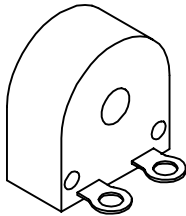
Models 11 and 12:

100A at 30°C amb., 80A at 55°C amb.

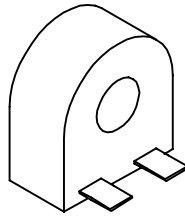
Model 13:

200A at 30°C amb., 120A at 55°C amb.

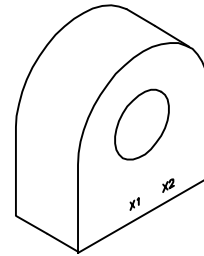
• Approximate weight: 0.1 - 0.2 lbs.



Model 11

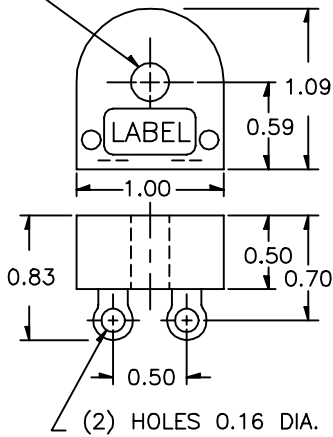


Model 12

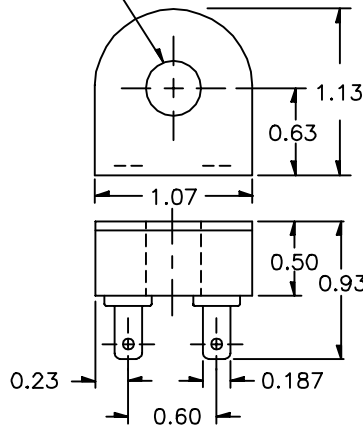


Model 13

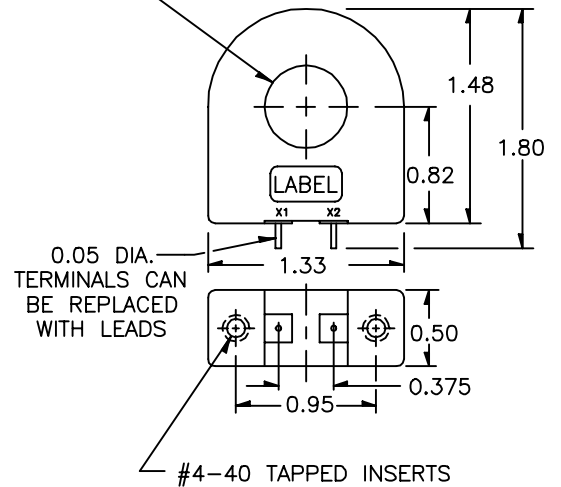
0.26 DIA. WINDOW OR
PRIMARY BAR WITH 8-32 BRASS SCREWS



0.37 WINDOW DIA.

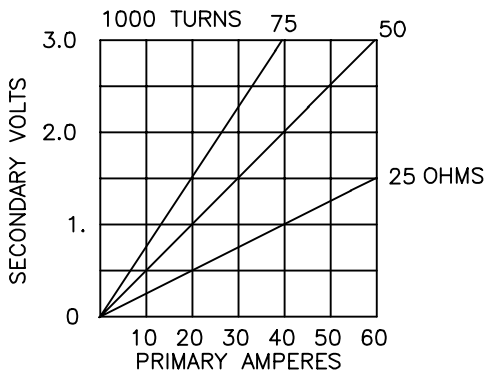


0.56 WINDOW DIA.

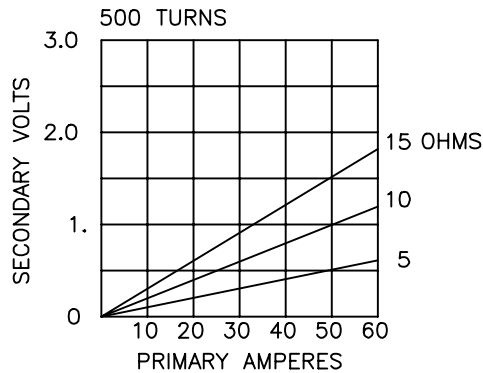


TYPICAL PERFORMANCE CHARACTERISTICS

Model 11



Model 12



Model 13

